

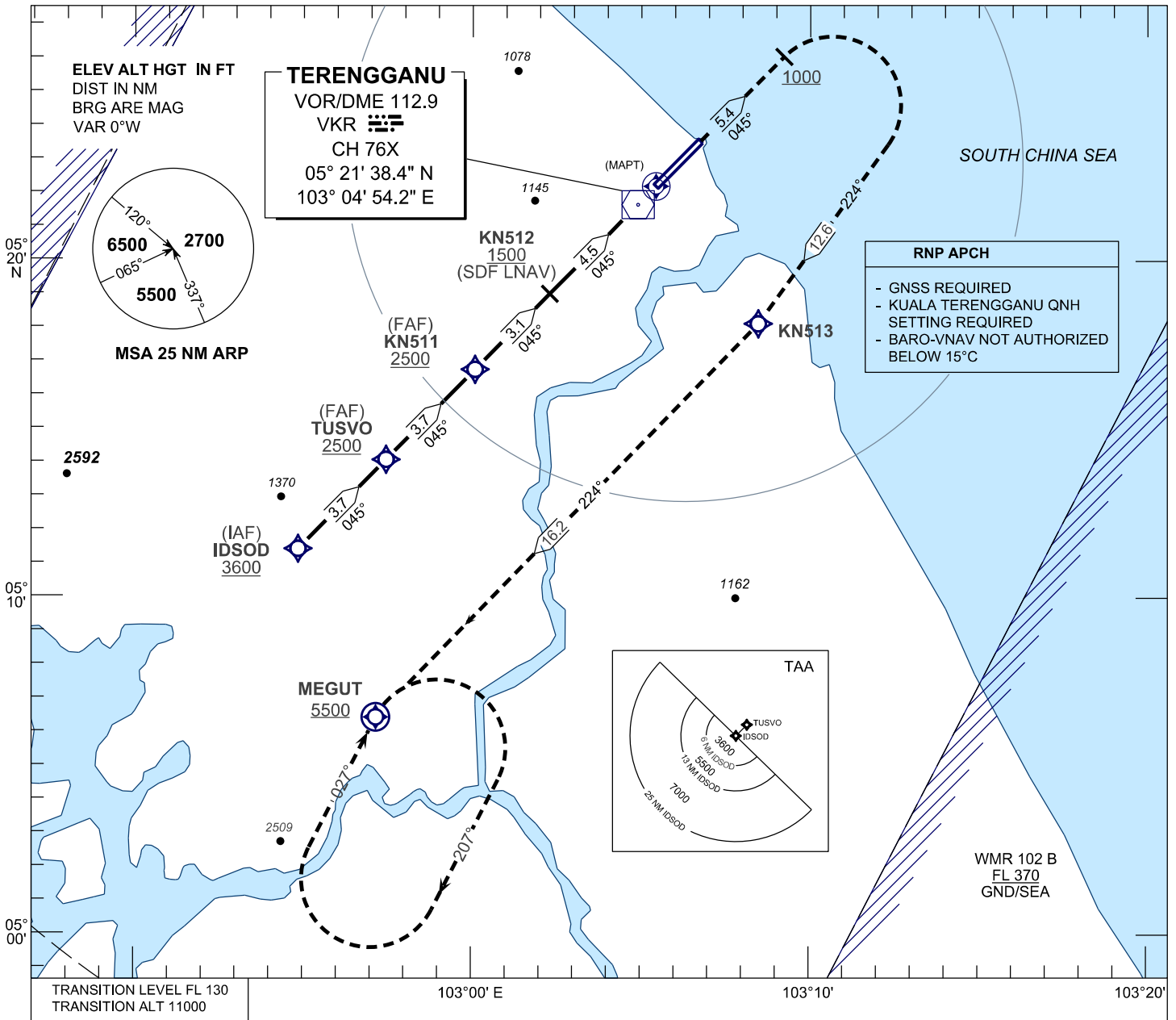
INSTRUMENT APPROACH CHART - ICAO

AERODROME ELEV 21 FT
HEIGHT RELATED TO
THR RWY 04 - ELEV 19 FT

APP	123.6
	235.32
	121.5
TWR	119.05
SMC	121.6
ATIS	126.65

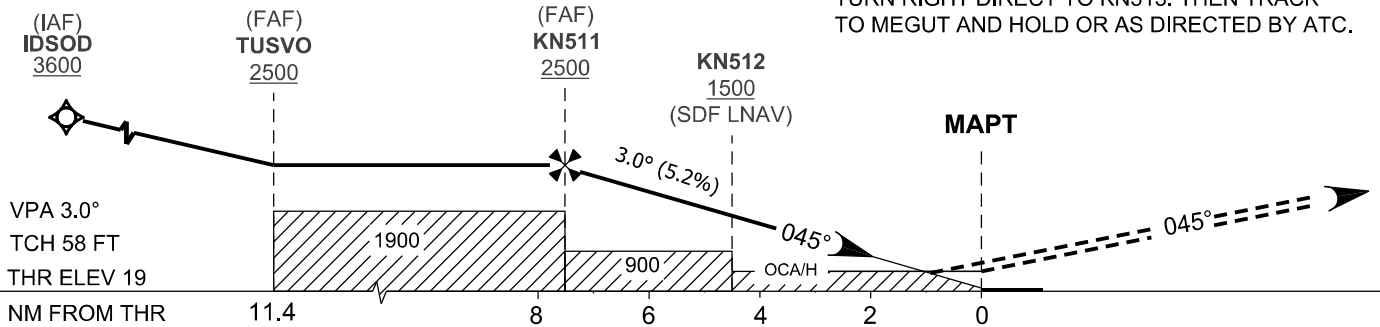
KUALA TERENGGANU/ SULTAN MAHMUD (WMKN) RWY 04

RNAV (GNSS) Y



MISSED APPROACH

CLIMB TO 5500 FT, AFTER PASSING 1000 FT TURN RIGHT DIRECT TO KN513. THEN TRACK TO MEGUT AND HOLD OR AS DIRECTED BY ATC.



OCA/H				
ACFT CAT.	A	B	C	D
LNAV	450 (431)			
LNAV/VNAV	425 (406)			

DISTANCE TO THRESHOLD (NM)	7.6	7.0	6.0	5.0	4.0	3.0	2.0	1.0
ALTITUDE (FT)	2500	2307	1988	1670	1351	1033	714	396