

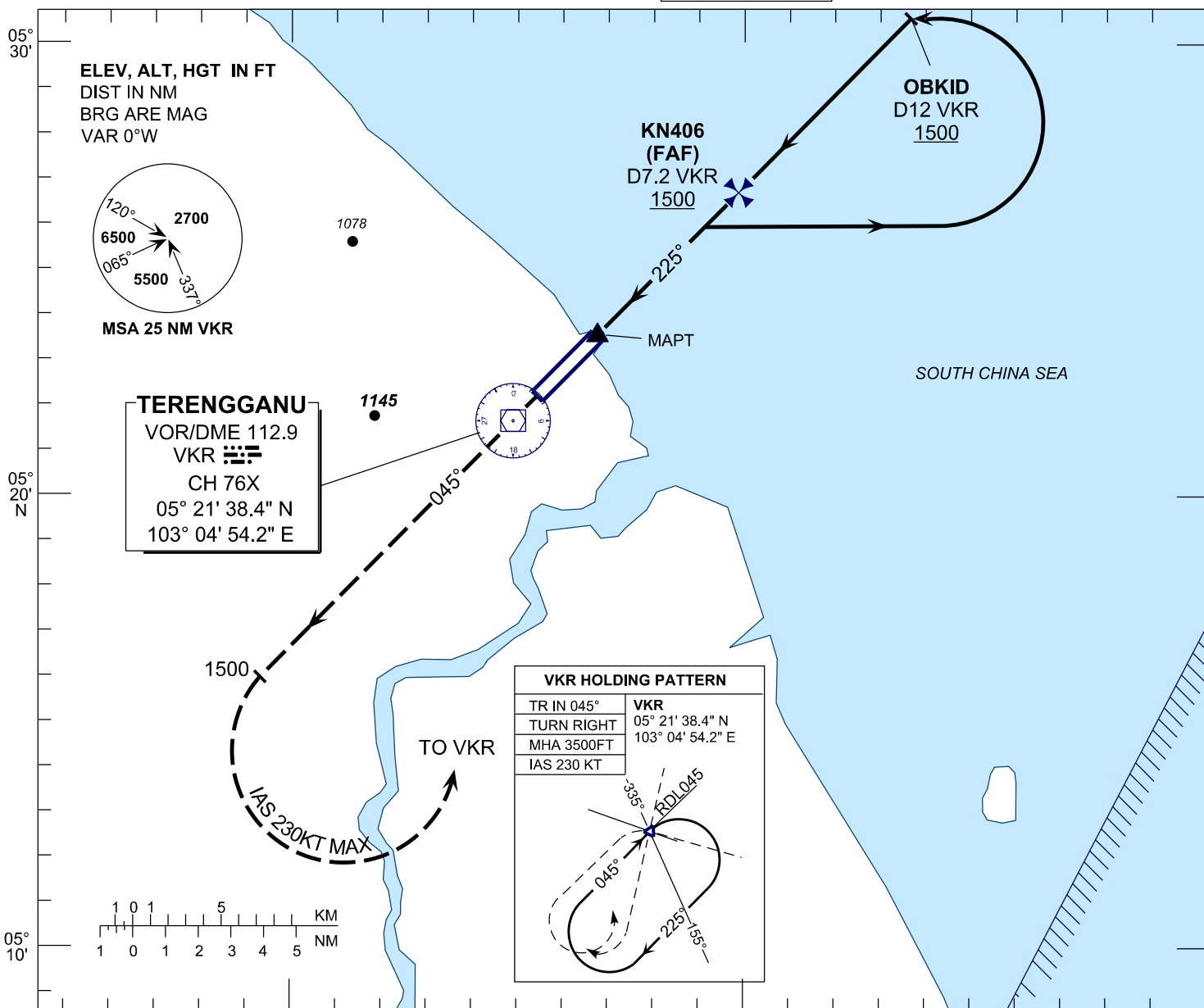
INSTRUMENT APPROACH CHART - ICAO

AERODROME ELEV 21 FT
HEIGHT RELATED TO
THR RWY 22 - ELEV 20 FT

APP	123.6
	235.32
	121.5
TWR	119.05
SMC	121.6
ATIS	126.65

**KUALA TERENGGANU/
SULTAN MAHMUD (WMKN)**
RWY 22

VOR Y



MISSED APPROACH
AT MAPT CLIMB TO 3500FT ON TRACK 225°
PASSING 1500 FT TURN LEFT
TO VKR AND HOLD OR AS DIRECTED BY ATC

TRANSITION LEVEL FL130
TRANSITION ALT 11 000

THR ELEV 20
TO THR 22 (NM)
TO VKR (DME)

OCA / OCH	A	B	C	D
VOR/DME	380 / (360)			

DME VKR	NM	7.2	6.0	5.0	4.0	3.0
DIST THR/RWY22	NM	4.6	3.4	2.4	1.4	0.4
ALTITUDE	FT	1500	1140	821	503	185

GS	KT	80	100	120	140	160	180
FAF - RWY22 (7.1NM)	MIN:SEC	3:23	2:42	2:15	1:56	1:42	1:30
RATE OF DESCEND(318.5FT/NM)	FT/MIN	420	530	630	740	840	950