

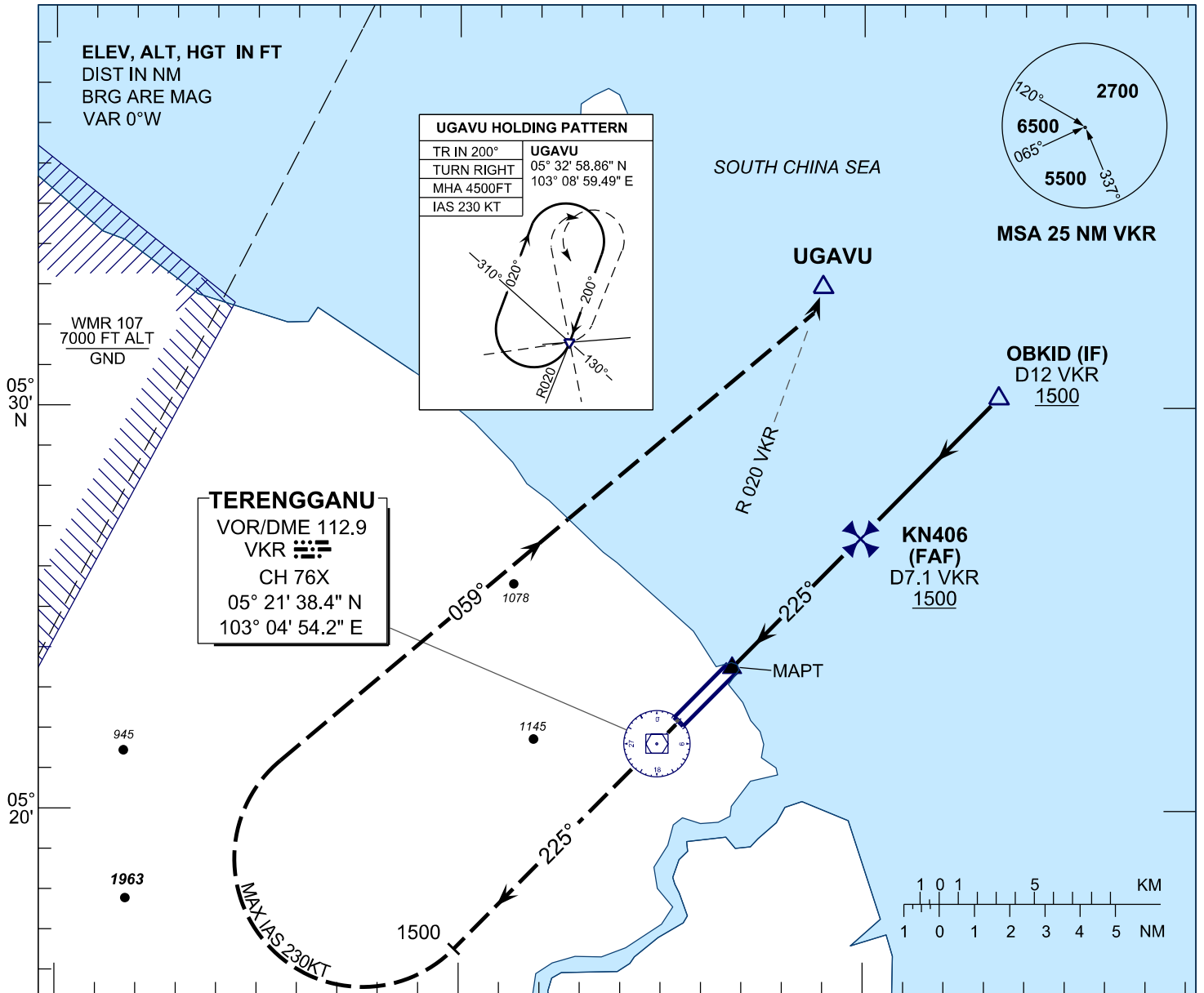
# INSTRUMENT APPROACH CHART - ICAO

AERODROME ELEV 21 FT  
HEIGHT RELATED TO  
THR RWY 22 - ELEV 20 FT

APP	123.6
	235.32
	121.5
TWR	119.05
SMC	121.6
ATIS	126.65

**KUALA TERENGGANU/  
SULTAN MAHMUD (WMKN)  
RWY 22**

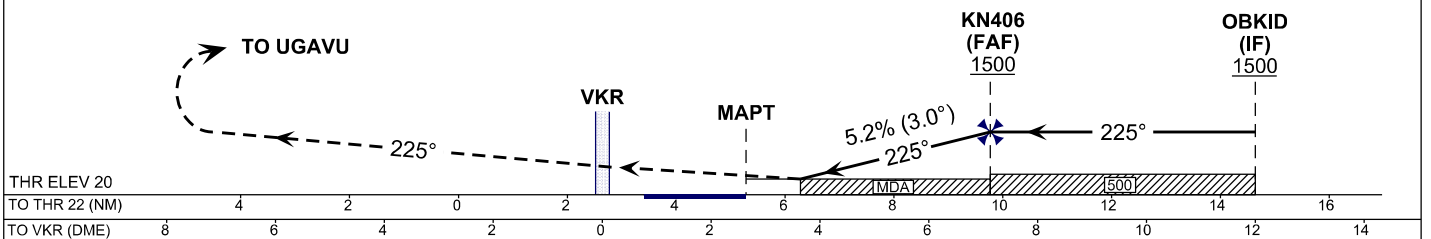
VOR Z



### MISSED APPROACH

AT MAPT CLIMB TO 4500 FT ON TRACK 225°  
PASSING 1500 FT TURN RIGHT TO UGAVU  
AND HOLD OR AS DIRECTED BY ATC

TRANSITION LEVEL FL130  
TRANSITION ALT 11000



OCA / OCH	A	B	C	D
VOR/DME	380 / (360)			

DME VKR	NM	7.1	6.1	5.1	4.1	3.1
DIST THR/RWY22	NM	4.5	3.5	2.5	1.5	0.5
ALTITUDE	FT	1500	1172	854	535	217

GS	KT	80	100	120	140	160	180
FAF - RWY22 (7.1NM)	MIN:SEC	3:23	2:42	2:15	1:56	1:42	1:30
RATE OF DESCEND(318.5FT/NM)	FT/MIN	420	530	630	740	840	950