

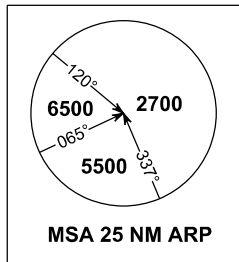
**STANDARD DEPARTURE CHART
INSTRUMENT (SID) - ICAO**

TRANSITION ALTITUDE
11000 FT

APP	123.6
	235.32
	121.5
TWR	119.05
SMC	121.6
ATIS	126.65

**KUALA TERENGGANU/
SULTAN MAHMUD (WMKN)**
RWY 22
RNP 1

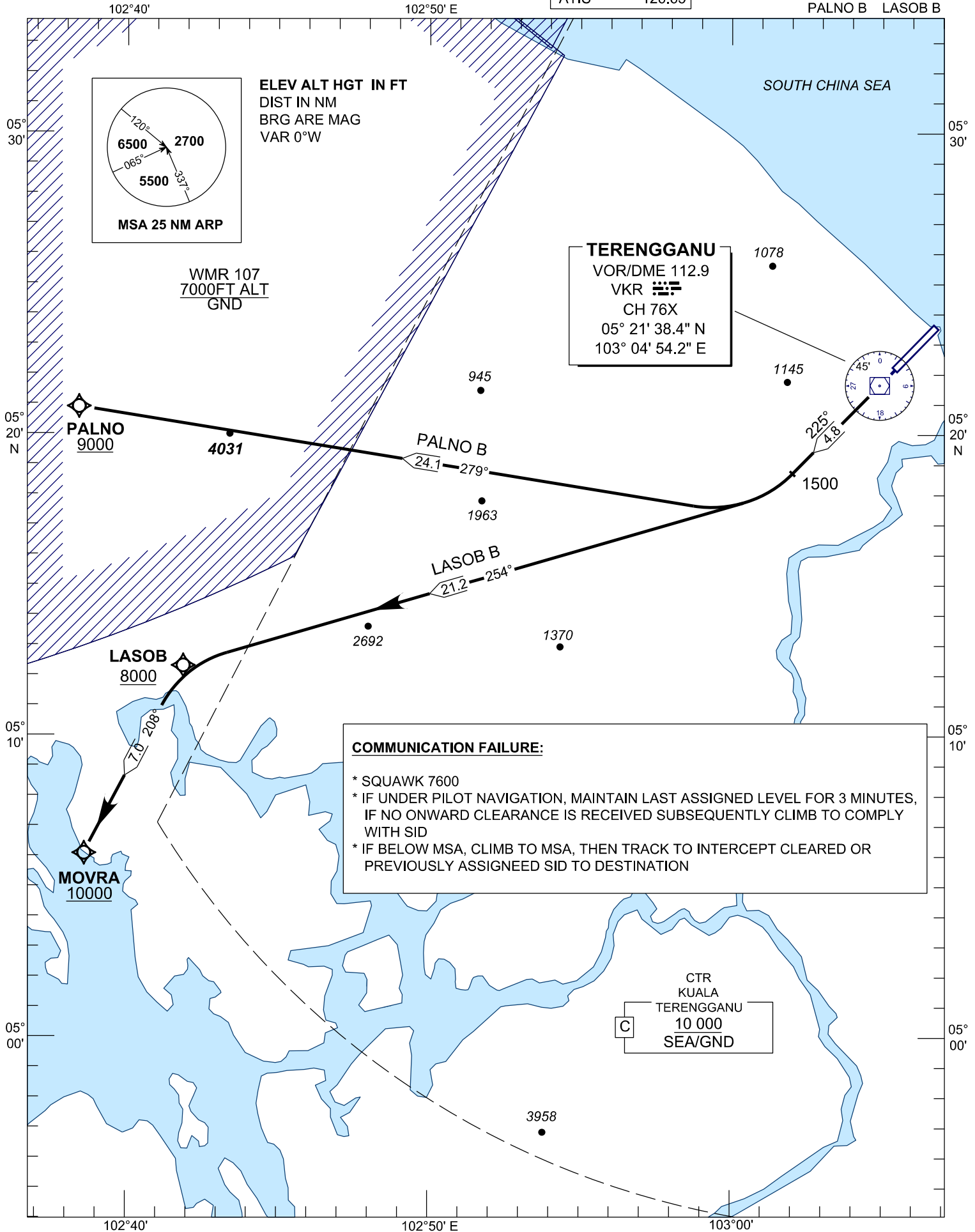
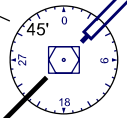
PALNO B LASOB B



ELEV ALT HGT IN FT
DIST IN NM
BRG ARE MAG
VAR 0°W

WMR 107
7000FT ALT
GND

TERENGGANU
VOR/DME 112.9
VKR
CH 76X
05° 21' 38.4" N
103° 04' 54.2" E



COMMUNICATION FAILURE:

- * SQUAWK 7600
- * IF UNDER PILOT NAVIGATION, MAINTAIN LAST ASSIGNED LEVEL FOR 3 MINUTES, IF NO ONWARD CLEARANCE IS RECEIVED SUBSEQUENTLY CLIMB TO COMPLY WITH SID
- * IF BELOW MSA, CLIMB TO MSA, THEN TRACK TO INTERCEPT CLEARED OR PREVIOUSLY ASSIGNED SID TO DESTINATION

CTR
KUALA
TERENGGANU
10 000
SEA/GND