

**INSTRUMENT
APPROACH
CHART - ICAO**

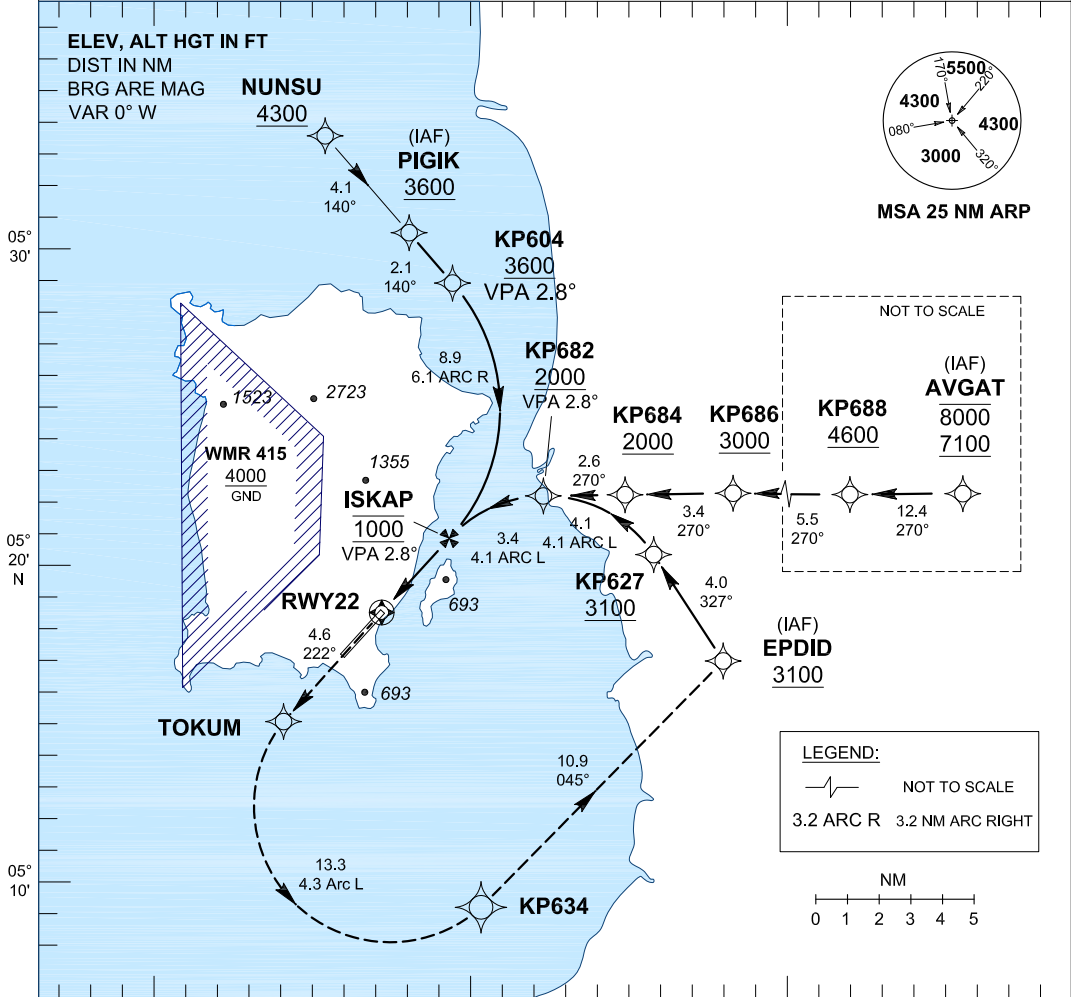
AERODROME ELEV 10 FT
HEIGHTS RELATED TO
THR RWY 04 - ELEV 9 FT

APP	125.8
TWR	121.1
SM	121.6
ATIS	126.4

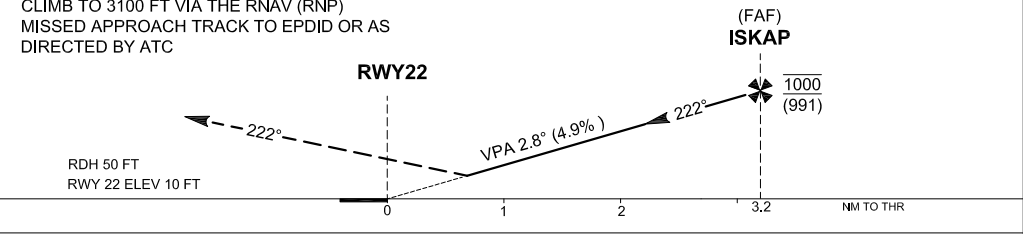
**PENANG/PENANG
INTERNATIONAL AIRPORT (WMKP)
RWY 22**

RNAV (RNP) Z

- 1. AUTHORIZATION REQUIRED**
- 2. GNSS REQUIRED**
- 3. RF REQUIRED**
- APPROACH NOT AUTHORIZED WHEN AIRPORT TEMPERATURE BELOW 20°C OR ABOVE 67°C
- WMKP ALTIMETER SETTING REQUIRED.
- PAPI AND VERTICAL PATH ANGLE NOT COINCIDENT
- PROCEDURE REQUIRES RNP 0.3 FROM IAFS TO RWY
- PROCEDURE REQUIRES RNP 0.5 FROM RWY TO TOKUM
- PROCEDURE REQUIRES RNP 0.5 FROM RWY TO TOKUM
- LATERAL TRANSITION TO MAP MUST NOT BE INITIATED PRIOR TO DA/H POSN



100° 10' N 100° 20' N 100° 30' N
 05° 30' N 05° 20' N 05° 10' N
 TRANSITION LEVEL FL 130
 TRANSITION ALT 11000



OCA/H		
ACFT CAT.	C	D
RNP 0.3	630 (620)	

GROUND SPEED - KT	70	90	100	120	140	160
RATE OF DESCENT (2.8°) (FEET/MIN)	340	446	495	594	693	792

DISTANCE TO THRESHOLD (NM)	3.2	2	1
ALTITUDE (FEET)	1000	670	370