

**INSTRUMENT  
APPROACH  
CHART - ICAO**

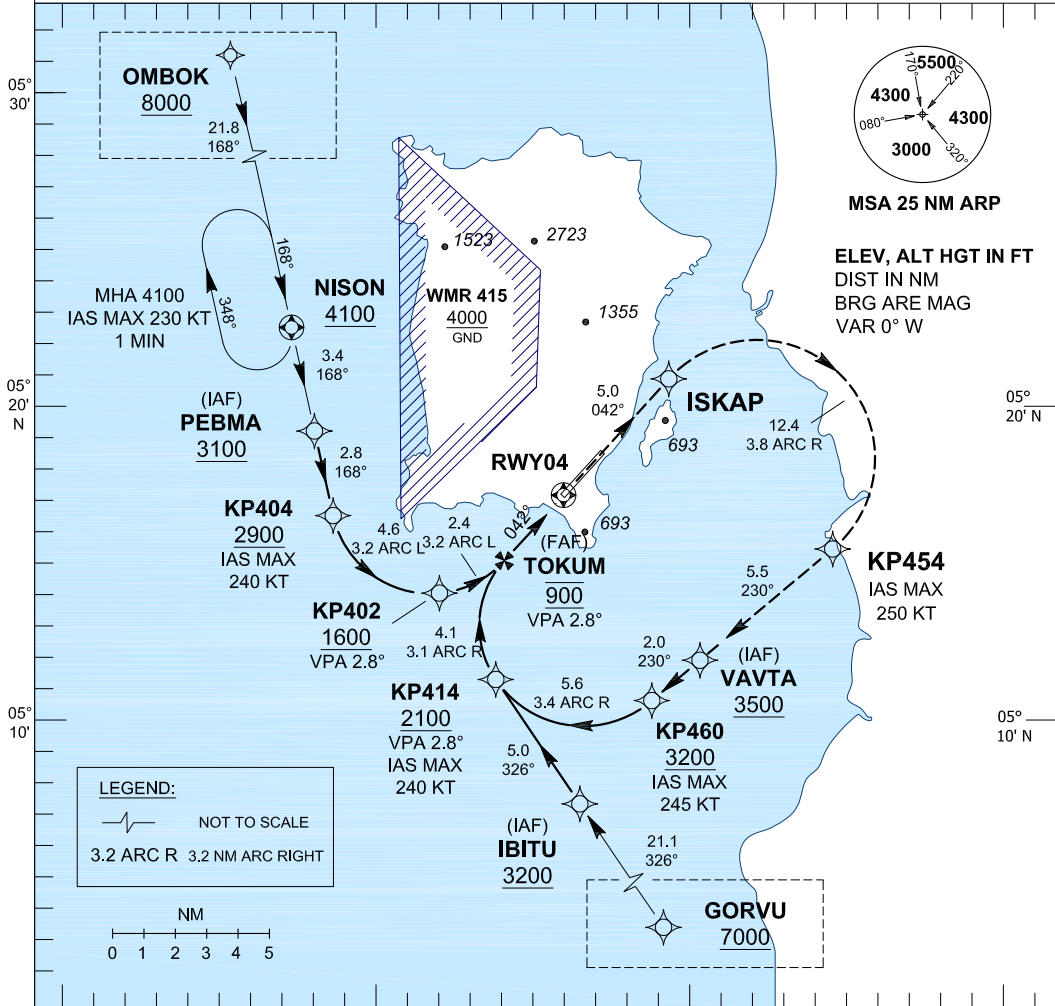
**AERODROME ELEV 10 FT**  
HEIGHTS RELATED TO  
THR RWY 04 - ELEV 9 FT

APP 125.8  
TWR 121.1  
SM 121.6  
ATIS 126.4

**PENANG/PENANG  
INTERNATIONAL AIRPORT (WMKP)  
RWY 04**

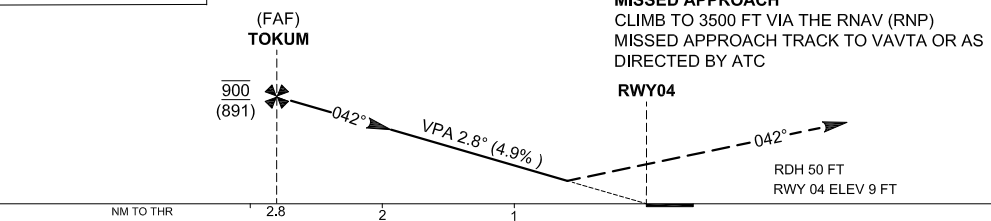
RNAV (RNP) Z

- AUTHORIZATION REQUIRED**      **2. GNSS REQUIRED**      **3. RF REQUIRED**
4. APPROACH NOT AUTHORIZED WHEN AIRPORT TEMPERATURE BELOW 20°C OR ABOVE 67°C
  5. WMKP ALTIMETER SETTING REQUIRED.
  6. PROCEDURE REQUIRES RNP 1.0 FROM OMBOK TO PEBMA
  7. PROCEDURE REQUIRES RNP 0.3 FROM IAFS TO RWY
  8. PROCEDURE REQUIRES RNP 0.5 FROM RWY TO ISKAP
  9. PAPI AND VERTICAL PATH ANGLE NOT COINCIDENT
  10. LATERAL TRANSITION TO MAP MUST NOT BE INITIATED PRIOR TO DA/H POSITION



TRANSITION LEVEL FL 130  
TRANSITION ALT 11000

100° 10' N      100° 20' N



OCA/H		
ACFT CAT.	C	D
RNP 0.3	<b>780 (771)</b>	

GROUND SPEED - KT	70	90	100	120	140	160
RATE OF DESCENT (2.8°) (FEET/MIN)	340	446	495	594	693	792

DISTANCE TO THRESHOLD (NM)	2.8	2	1
ALTITUDE (FEET)	900	670	370