

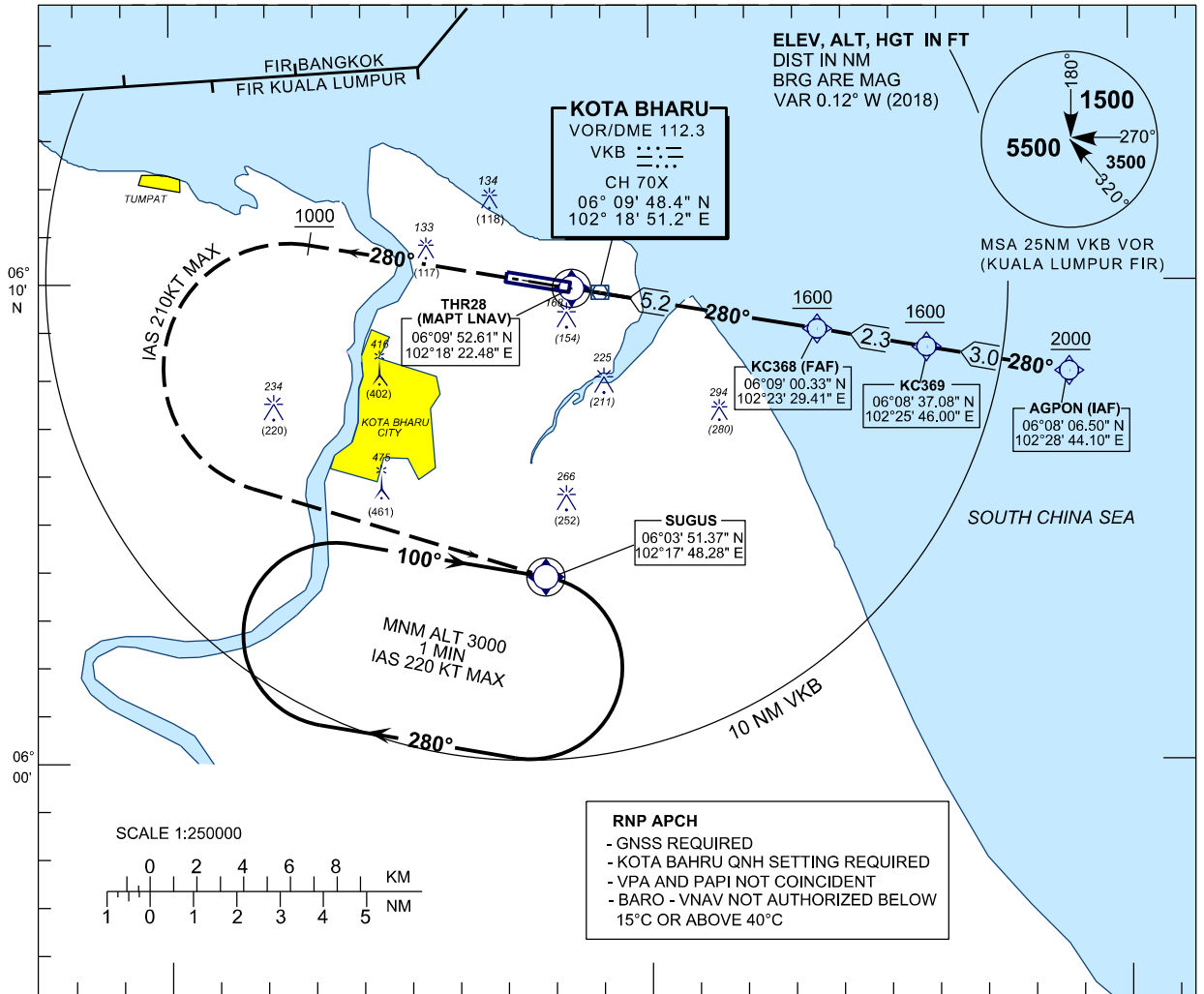
**INSTRUMENT  
APPROACH  
CHART - ICAO**

**AERODROME ELEV 16FT**  
HEIGHT RELATED TO  
THR RWY28 - ELEV 14 FT

APP 120.85,130.3  
TWR 122.5  
SMC 121.6  
ATIS 128.85

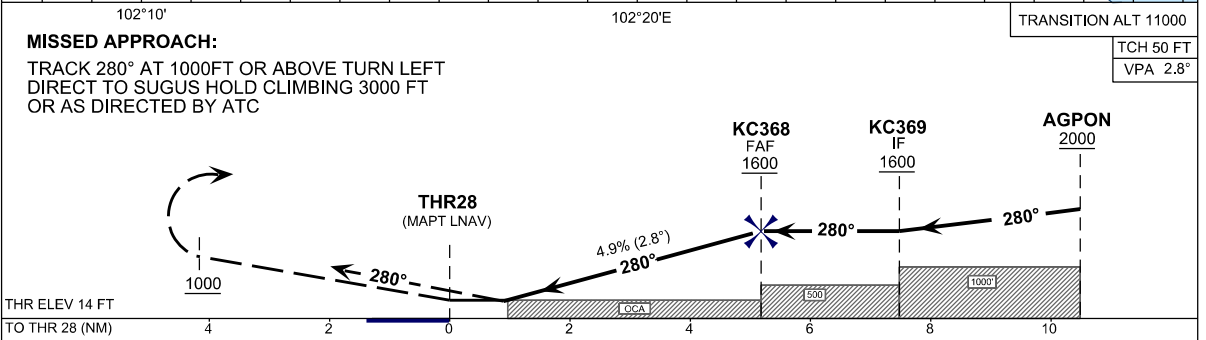
**KOTA BHARU /  
SULTAN ISMAIL PETRA (WMKC)  
RWY28**

RNAV(GNSS) Y



**RNP APCH**

- GNSS REQUIRED
- KOTA BAHRU QNH SETTING REQUIRED
- VPA AND PAPI NOT COINCIDENT
- BARO - VNAV NOT AUTHORIZED BELOW 15°C OR ABOVE 40°C



OCA (OCH)	A	B	C	D
LNAV	<b>400 (384)</b>			
LNAV/VNAV	350(336)	360(346)	370(356)	380(366)

DIST RWY28	NM	5.2	4.2	3.2	2.2	1.3
ALTITUDE	FT	1600	1280	980	680	400
GS	KT	100	120	140	160	180
FAF - RW28 (5.2 NM)	MIN:SEC	3:06	2:36	2:13	1:57	1:44
RATE OF DESCEND (297 FT / NM)	FT/MIN	490	590	690	790	890