

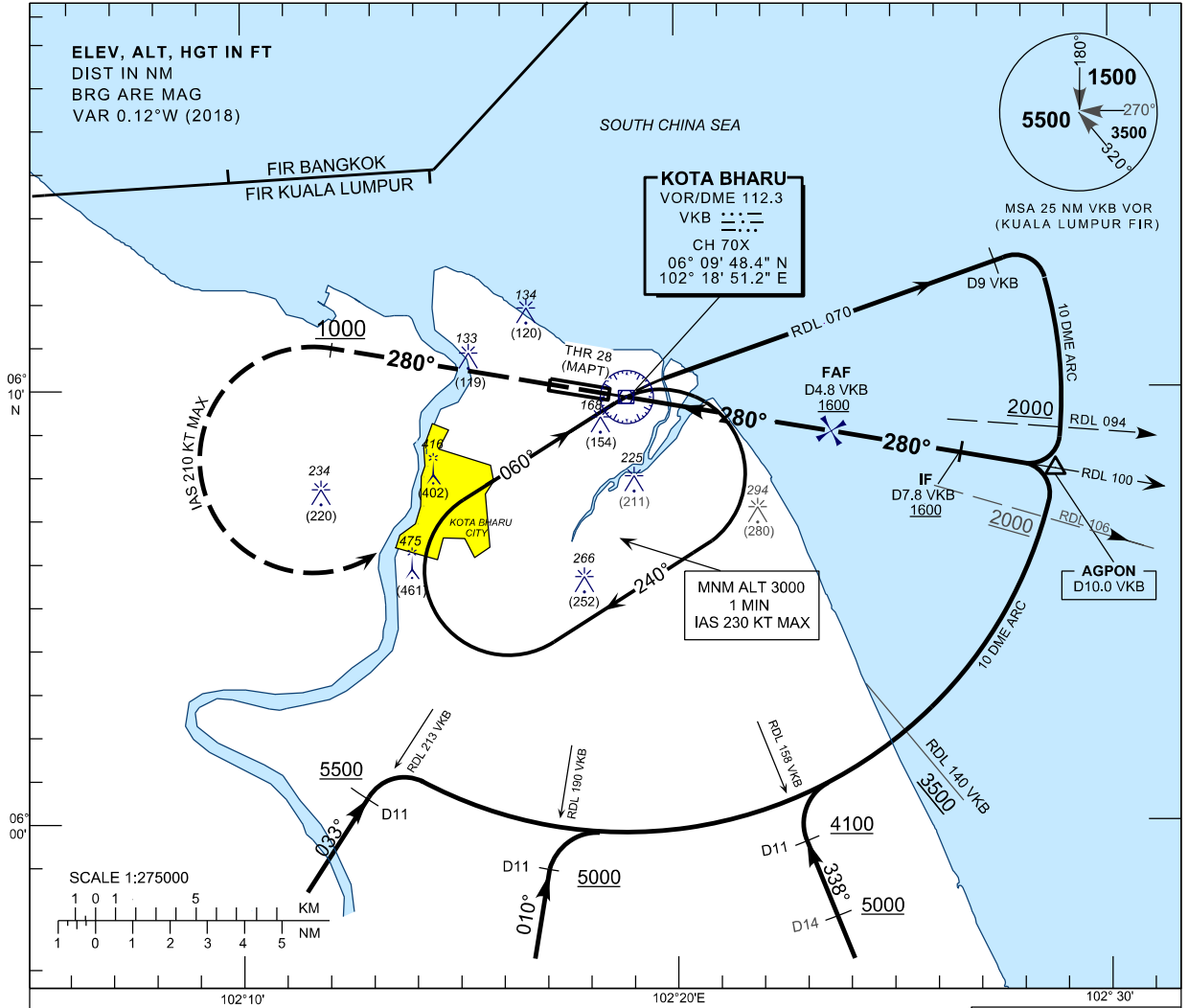
**INSTRUMENT
APPROACH
CHART - ICAO**

AERODROME ELEV 16 FT
HEIGHT RELATED TO
THR RWY28 - ELEV 14 FT

APP 120.85,130.3
TWR 122.5
SMC 121.6
ATIS 128.85

**KOTA BHARU /
SULTAN ISMAIL PETRA (WMKC)
RWY28**

VOR Z
(10 DME ARC)

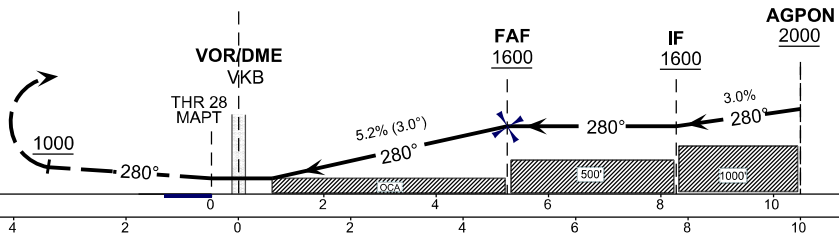


MISSED APPROACH

TRACK 280°, AT 1000 FT OR ABOVE TURN LEFT TRACK
DIRECT TO VKB VOR HOLD CLIMB 3000 FT TO HOLD
OR AS DIRECTED BY ATC.

TRANSITION ALT 11000

TCH 50 FT



THR ELEV 14 FT
TO THR 28 (NM)
TO VKB (DME)

OCA/H	A	B	C	D	DME VKB	4.8	4.0	3.0	2.0	1.1
VOR/DME	430 (414)				ALTITUDE	1600	1262	944	625	430
					GS(KT)	80	100	120	140	160
					FAF - RW28(4.8 NM)	3:57	3:10	2:38	2:16	1:59
					RATE OF DESCEND	380	480	570	670	770