

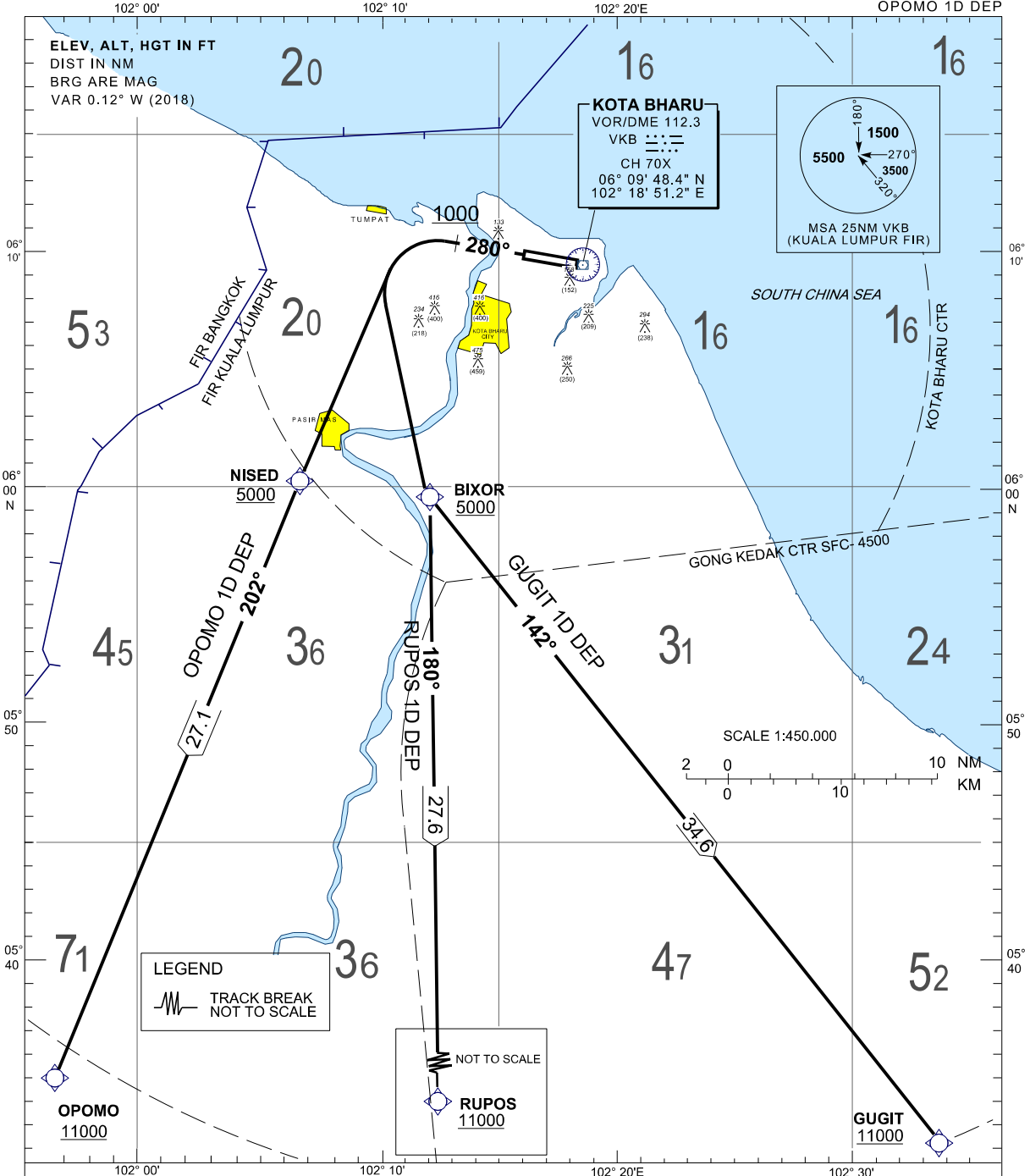
**STANDARD DEPARTURE CHART
INSTRUMENT (SID) - ICAO**

**KOTA BHARU /
SULTAN ISMAIL PETRA (WMKC)
RWY 28**

TRANSITION ALTITUDE
11000FT

APP 120.85,130.3
TWR 122.5
SMC 121.6
ATIS 128.85

GUGIT 1D DEP
RUPOS 1D DEP
OPOMO 1D DEP



| RATE OF CLIMB(FT) | | | | | | |
|-------------------|------|-----|-----|-----|-----|------|
| GND SPEED - KT | 120 | 150 | 180 | 210 | 240 | 270 |
| GRADIENT | 5.2% | 560 | 700 | 840 | 980 | 1120 |
| | 3.3% | 401 | 501 | 602 | 702 | 802 |

COMMUNICATION FAILURE

- SQUAWK 7600
- IF UNDER PILOT NAVIGATION, MAINTAIN LAST ASSIGNED LEVEL FOR 3 MINUTE, IF NO ONWARD CLEARANCE IS RECEIVED, SUBSEQUENTLY CLIMB TO COMPLY WITH SID.
- IF UNDER RADAR VECTORING, MAINTAIN VECTOR FOR 2 MINUTES
- IF BELOW MSA, CLIMB TO MSA, THEN TRACK TO INTERCEPT CLEARED OR PREVIOUSLY ASSIGNED SID TO DESTINATION.