

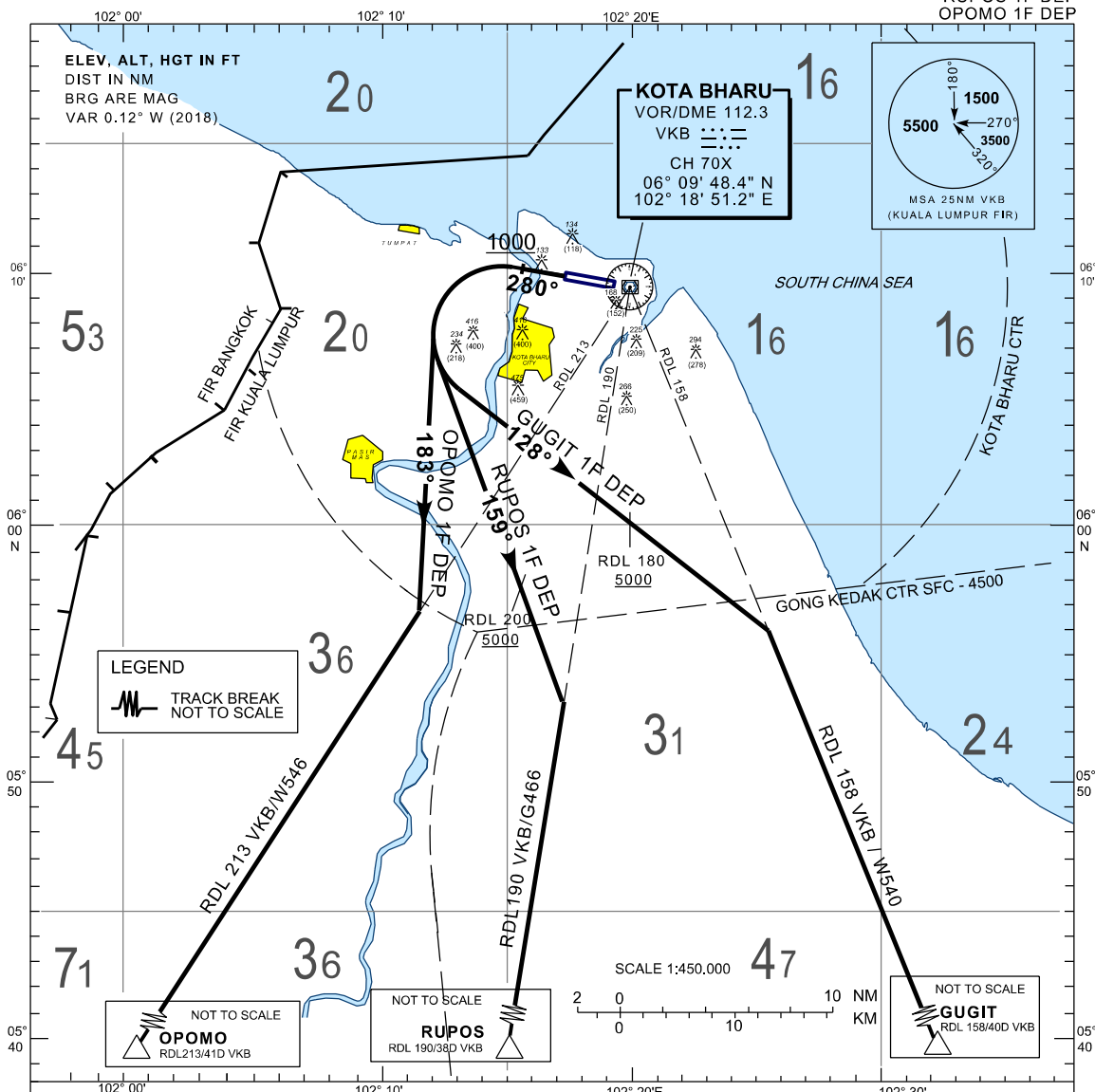
**STANDARD DEPARTURE CHART
INSTRUMENT (SID) - ICAO**

**KOTA BHARU /
SULTAN ISMAIL PETRA (WMKC)
RWY 28**

TRANSITION ALTITUDE
11000FT

APP 120.85,130.3
TWR 122.5
SMC 121.6
ATIS 128.85

GUGIT 1F DEP
RUPOS 1F DEP
OPOMO 1F DEP



RUPOS 1 FOXTROT DEPARTURE

TRACK HEADING 280° AT 10000FT TURN LEFT
HEADING 159° TO INTERCEPT RDL190 VKB
VOR TO RUPOS / G466
NOTE*
1. PDG 5.2% UNTIL REACHING 5000 FT
2. CROSS R-200 VKB VOR AT 5000FT OR ABOVE

OPOMO 1 FOXTROT DEPARTURE

TRACK HEADING 280° AT 10000FT TURN LEFT
HEADING 183° TO INTERCEPT RDL213 VKB
VOR TO OPOMO / W546
NOTE*
1. PDG 5.2% UNTIL REACHING 5000 FT

GUGIT 1 FOXTROT DEPARTURE

TRACK HEADING 280° AT 10000FT TURN LEFT
HEADING 128° TO INTERCEPT RDL158 VKB
VOR TO GUGIT / W540
NOTE*
1. PDG 5.2% UNTIL REACHING 5000 FT
2. CROSS RDL180 VKB VOR AT 5000FT OR ABOVE

		RATE OF CLIMB (FT)					
GROUND SPEED (KT)		120	150	180	210	240	270
GRADIENT	3.3%	401	501	601	701	802	902
	5.2%	672	790	948	1106	1264	1421

COMMUNICATION FAILURE

- SQUAWK 7600
- IF UNDER PILOT NAVIGATION, MAINTAIN LAST ASSIGNED LEVEL FOR 3 MINUTE, IF NO ONWARD CLEARANCE IS RECEIVED, SUBSEQUENTLY CLIMB TO COMPLY WITH SID.
- IF UNDER RADAR VECTORED, MAINTAIN VECTOR FOR 2 MINUTES
- IF BELOW MSA, CLIMB TO MSA, THEN TRACK TO INTERCEPT CLEARED OR PREVIOUSLY ASSIGNED SID TO DESTINATION.