

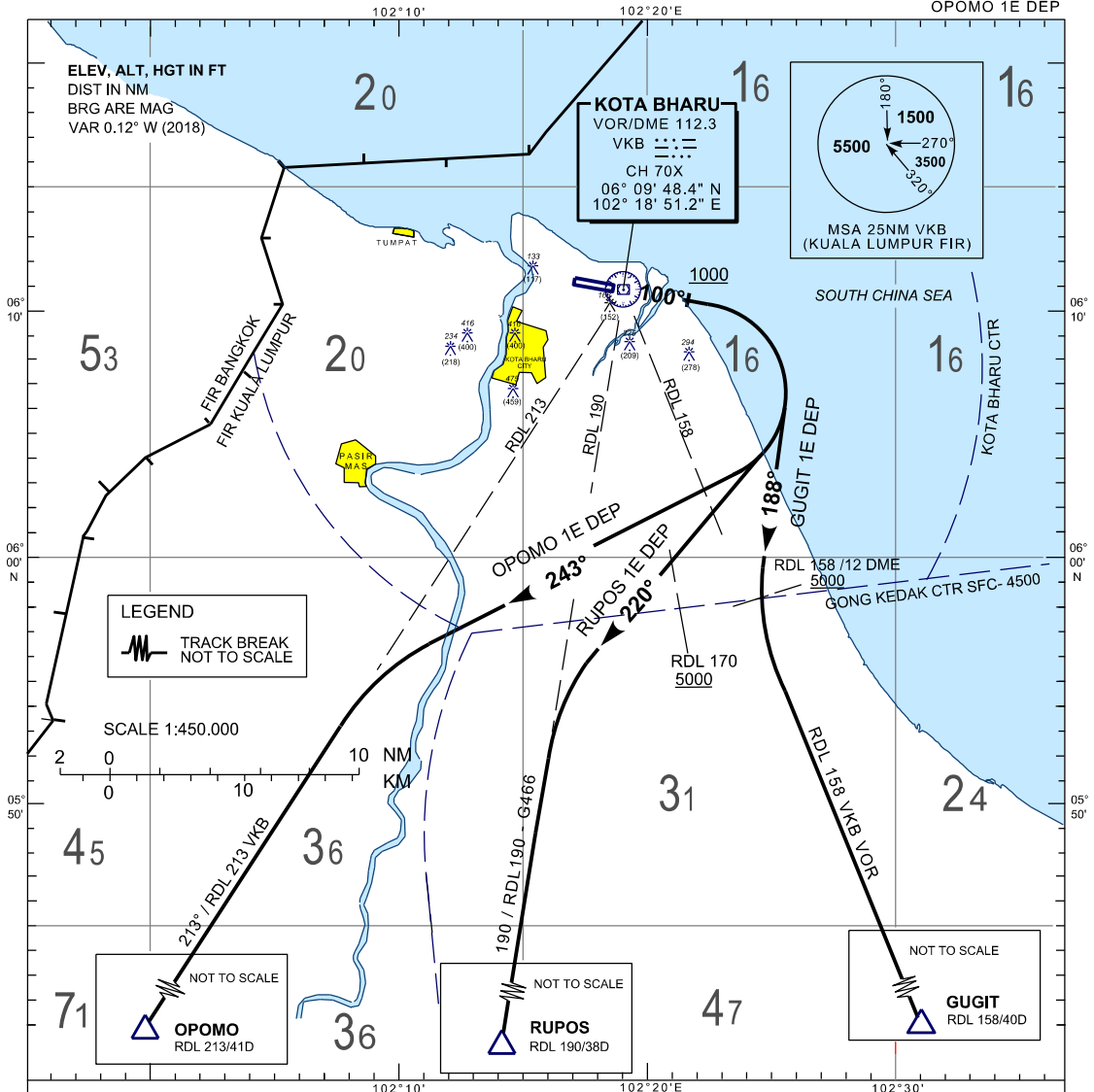
**STANDARD DEPARTURE CHART
INSTRUMENT (SID) - ICAO**

**KOTA BHARU /
SULTAN ISMAIL PETRA (WMKC)
RWY 10**

APP 120.85,130.3
TWR 122.5
SMC 121.6
ATIS 128.85

TRANSITION ALTITUDE
11000FT

GUGIT 1E DEP
RUPOS 1E DEP
OPOMO 1E DEP



OPOMO 1 ECHO DEPARTURE

TRACK HEADING 100° AT 1000FT OR ABOVE
TURN RIGHT HEADING 243° TO INTERCEPT
RDL 213 VKB VOR TO OPOMO/ W546

NOTE*

1. PDG 4.4% UNTIL PASSING 5000FT

GUGIT 1 ECHO DEPARTURE

TRACK HEADING 100° AT 1000FT OR ABOVE
TURN RIGHT TRACK 188° TO INTERCEPT
RDL158 VKB VOR TO GUGIT/ W540

NOTE*

1. PDG 5.7% UNTIL PASSING 5000FT
2. CROSS 12 DME ON RDL 158 VKB VOR 5000FT OR ABOVE

RUPOS 1 ECHO DEPARTURE

TRACK HEADING 100° AT 1000FT OR ABOVE
TURN RIGHT TRACK 220° TO INTERCEPT
RDL190 VKB VOR TO RUPOS/ G466

NOTE*

1. PDG 5.7% UNTIL PASSING 5000FT
2. CROSS RDL170 VKB VOR 5000FT OR ABOVE

RATE OF CLIMB(FT)						
GND SPEED - KT	120	150	180	210	240	270
GRADIENT	3.3%	401	501	601	702	802
	4.4%	535	668	802	936	1069
	5.7%	692	866	1039	1212	1385

COMMUNICATION FAILURE

- SQUAWK 7600
- IF UNDER PILOT NAVIGATION, MAINTAIN LAST ASSIGNED LEVEL FOR 3 MINUTE, IF NO ONWARD CLEARANCE IS RECEIVED, SUBSEQUENTLY CLIMB TO COMPLY WITH SID.
- IF UNDER RADAR VECTORED, MAINTAIN VECTOR FOR 2 MINUTES
- IF BELOW MSA, CLIMB TO MSA, THEN TRACK TO INTERCEPT CLEARED OR PREVIOUSLY ASSIGNED SID TO DESTINATION.