

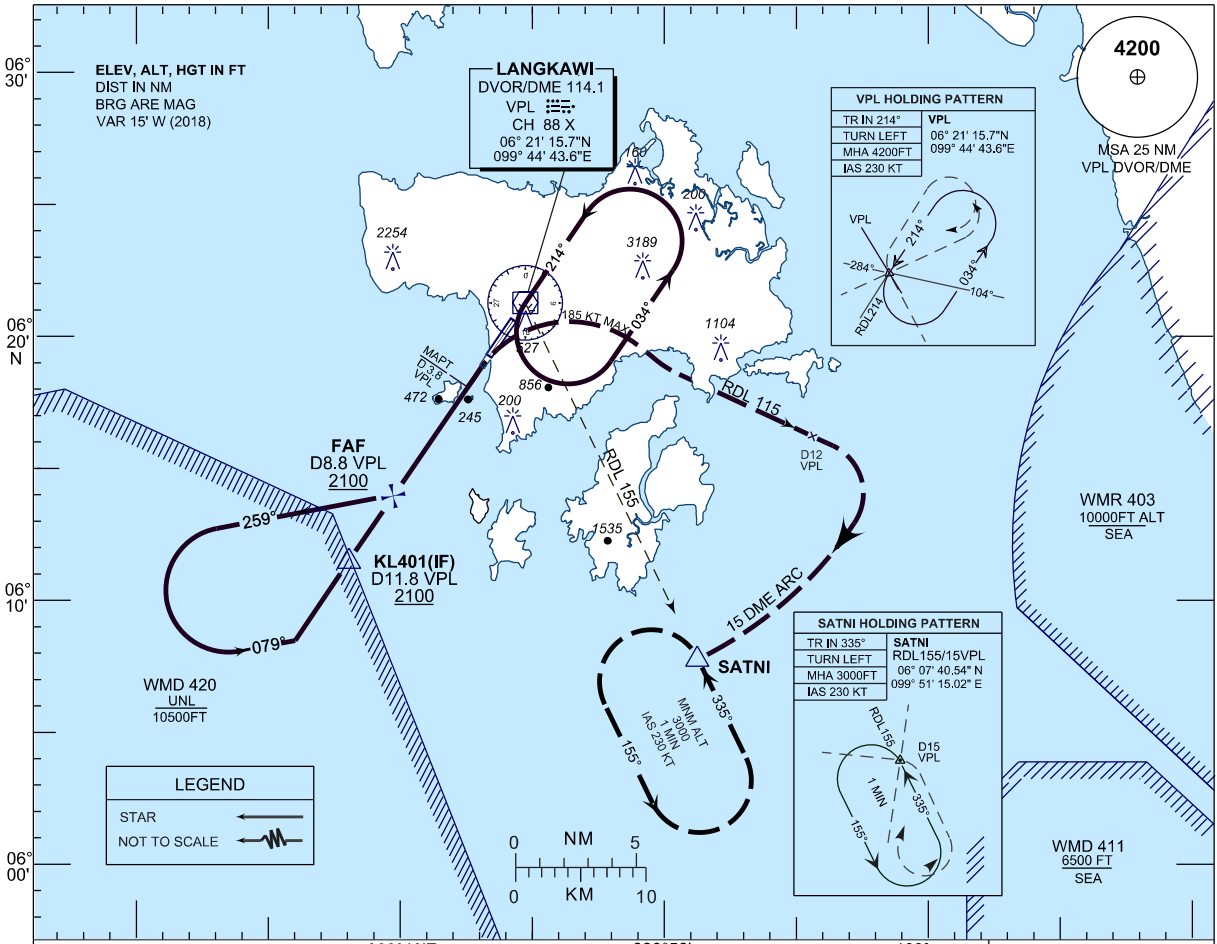
**INSTRUMENT  
APPROACH  
CHART - ICAO**

**AERODROME ELEV 16 FT**  
HEIGHT RELATED TO DISP  
THR RWY 03 - ELEV 16 FT  
ILS REF. DATUM 53 FT

APP 119.4, 257.8  
TWR 118.5  
SMC 121.8  
ATIS 128.2

**LANGKAWI / LANGKAWI  
INTERNATIONAL AIRPORT (WMKL)  
RWY 03**

VOR Y  
(CAT A & B ONLY)

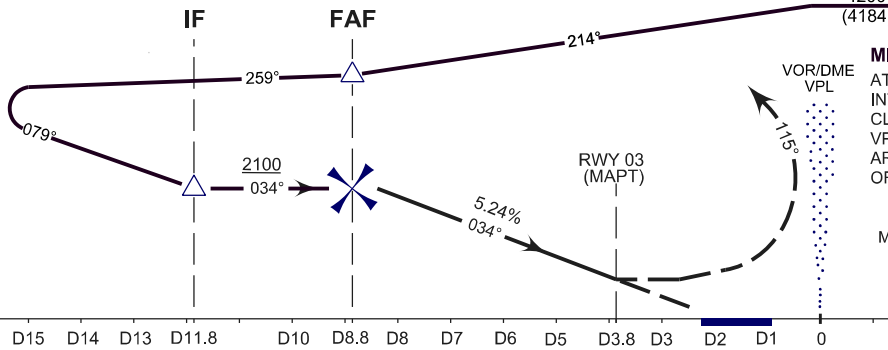


TRANSITION LEVEL FL130  
TRANSITION ALT 11000

**MISSED APPROACH**  
AT MAPT TURN RIGHT TO INTERCEPT RDL115 VPL  
CLIMB TO 3000 FT AT 12 DME  
VPL TURN RIGHT TO JOIN 15 DME ARC VPL AND HOLD AT SATNI OR AS DIRECTED BY ATC

**CAUTION**  
MISSED APPROACH TURN SPEED  
MAX IAS 185 KT

THR ELEV 16'



OCA (OCH)	A	B	DME VPL	NM	8.8	7.8	6.8	5.8	4.8	3.8	2.8
VOR/DME	810 (794)		DIST THR/RWY03	NM	6.3	5.3	4.3	3.3	2.3	1.3	0.3
			ALTITUDE	FT	2070	1750	1430	1110	790	480	160
GS			KT		80	100	120	140	160	180	
FAF03 - RWY03 (6.4NM)			MIN:SEC		4:48	3:50	3:12	2:45	2:24	2:08	
RATE OF DESCEND(328.37FT/NM)			FT/MIN		430	540	650	760	860	970	