

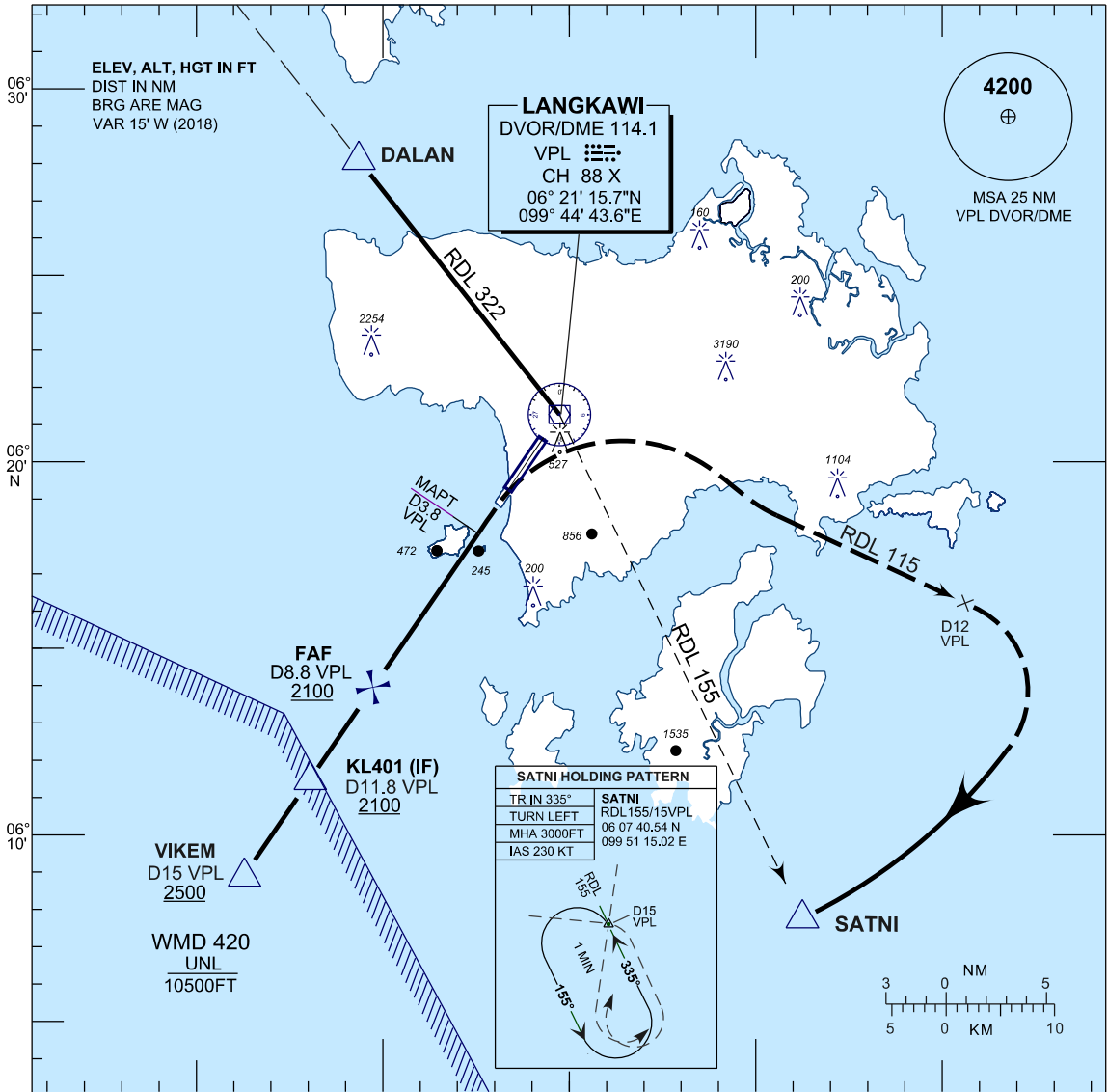
**INSTRUMENT
APPROACH
CHART - ICAO**

AERODROME ELEV 16 FT
HEIGHT RELATED TO DISP
THR RWY 03 - ELEV 16 FT
ILS REF. DATUM 53 FT

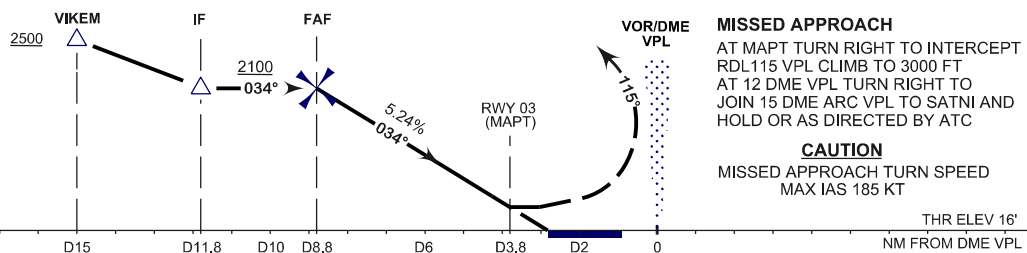
APP 119.4, 257.8
TWR 118.5
SMC 121.8
ATIS 128.2

**LANGKAWI / LANGKAWI
INTERNATIONAL AIRPORT (WMKL)
RWY 03**

VOR Z
(15 DME ARC)



TRANSITION LEVEL FL130
TRANSITION ALT 11000



OCA (OCH)	A	B	C	D
VOR/DME	810 (794)			

DME VPL	NM	8.8	7.8	6.8	5.8	4.8	3.8	2.8
DIST THR/RWY03	NM	6.3	5.3	4.3	3.3	2.3	1.3	0.3
ALTITUDE	FT	2070	1750	1430	1110	790	480	160

GS	KT	80	100	120	140	160	180
FAF03 - RWY03 (6.4NM)	MIN:SEC	4:48	3:50	3:12	2:45	2:24	2:08
RATE OF DESCEND(328.37FT/NM)	FT/MIN	430	540	650	760	860	970