

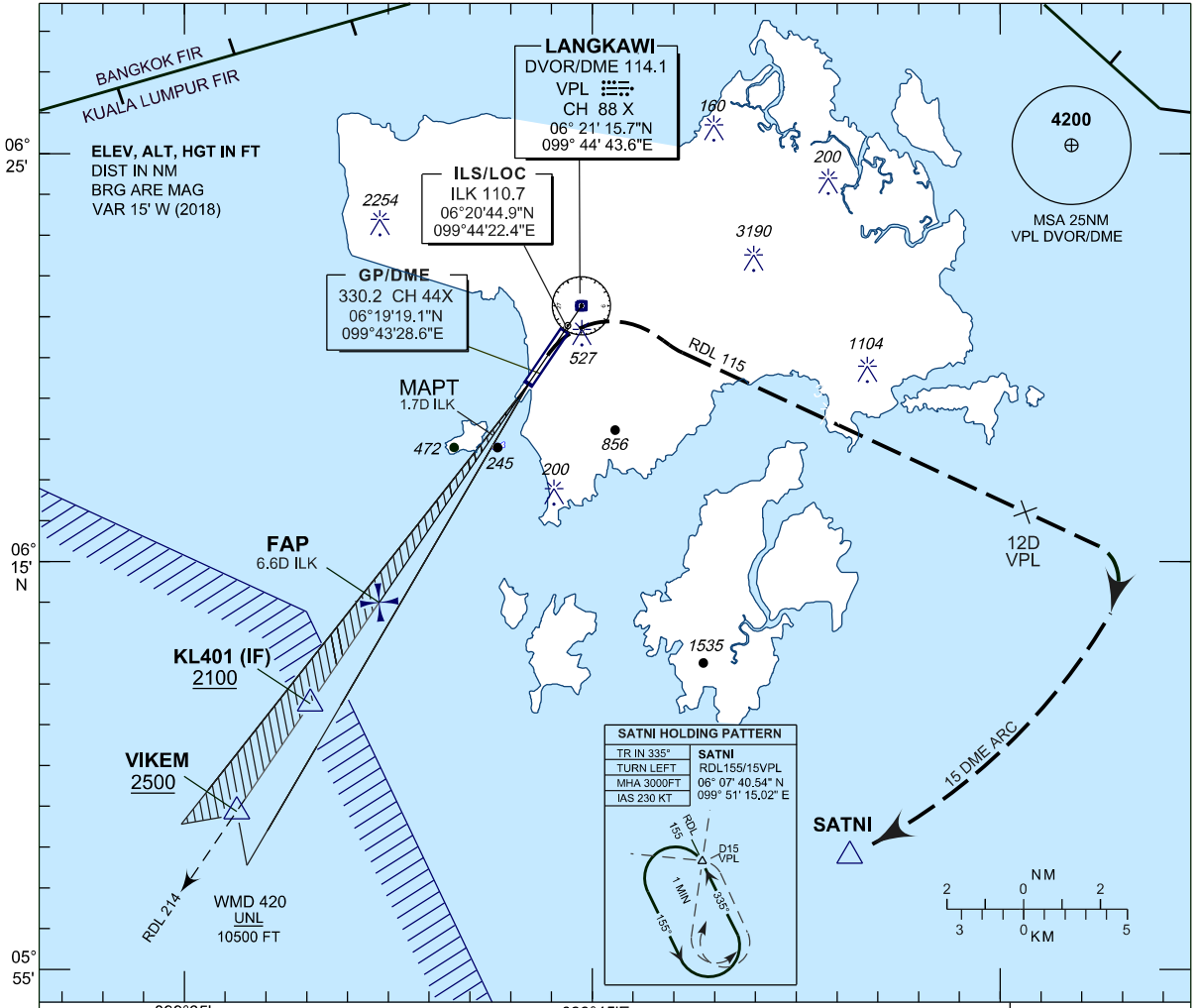
INSTRUMENT APPROACH CHART - ICAO

AERODROME ELEV 16 FT
 HEIGHT RELATED TO DISP
 THR RWY 03 - ELEV 16 FT
 ILS REF. DATUM 53 FT

APP 119.4, 257.8
 TWR 118.5
 SMC 121.8
 ATIS 128.2

LANGKAWI / LANGKAWI INTERNATIONAL AIRPORT (WMKL)
RWY 03

ILS Z OR LOC Z



USE QNH

STAR FROM NORTH / EAST / SOUTH / WEST

THR ELEV 16'

NM FROM DME ILK

NM FROM DME VPL

DVOR/DME VPL

MISSED APPROACH

AT MAPT CLIMB TO 3000FT ON PASSING 770FT TURN RIGHT TO INTERCEPT RDL115 VPL AT 12DME VPL TURN RIGHT TO INTERCEPT 15DME ARC VPL AND HOLD AT SATNI OR AS DIRECTED BY ATC.

CAUTION

MISSED APPROACH TURN SPEED
 MAX IAS 185 KT

OCA (OCH)	A	B	C	D
ILS/DME CAT I	643 (627)			
LOC/DME	643 (627)			

DME ILK	NM	6.5	5.5	4.5	3.5	2.5	1.5	0.5
DIST THR/RWY03	NM	6.3	5.3	4.3	3.3	2.3	1.3	0.3
ALTITUDE	FT	2070	1750	1430	1120	810	500	190

GROUND SPEED	KT	80	100	120	140	160	180
FAP - RWY03 (6.4 NM)	MIN:SEC	4:48	3:50	3:12	2:45	2:24	2:8
RATE OF DESCEND(326.30FT/NM)	FT/MIN	430	540	650	760	870	970