

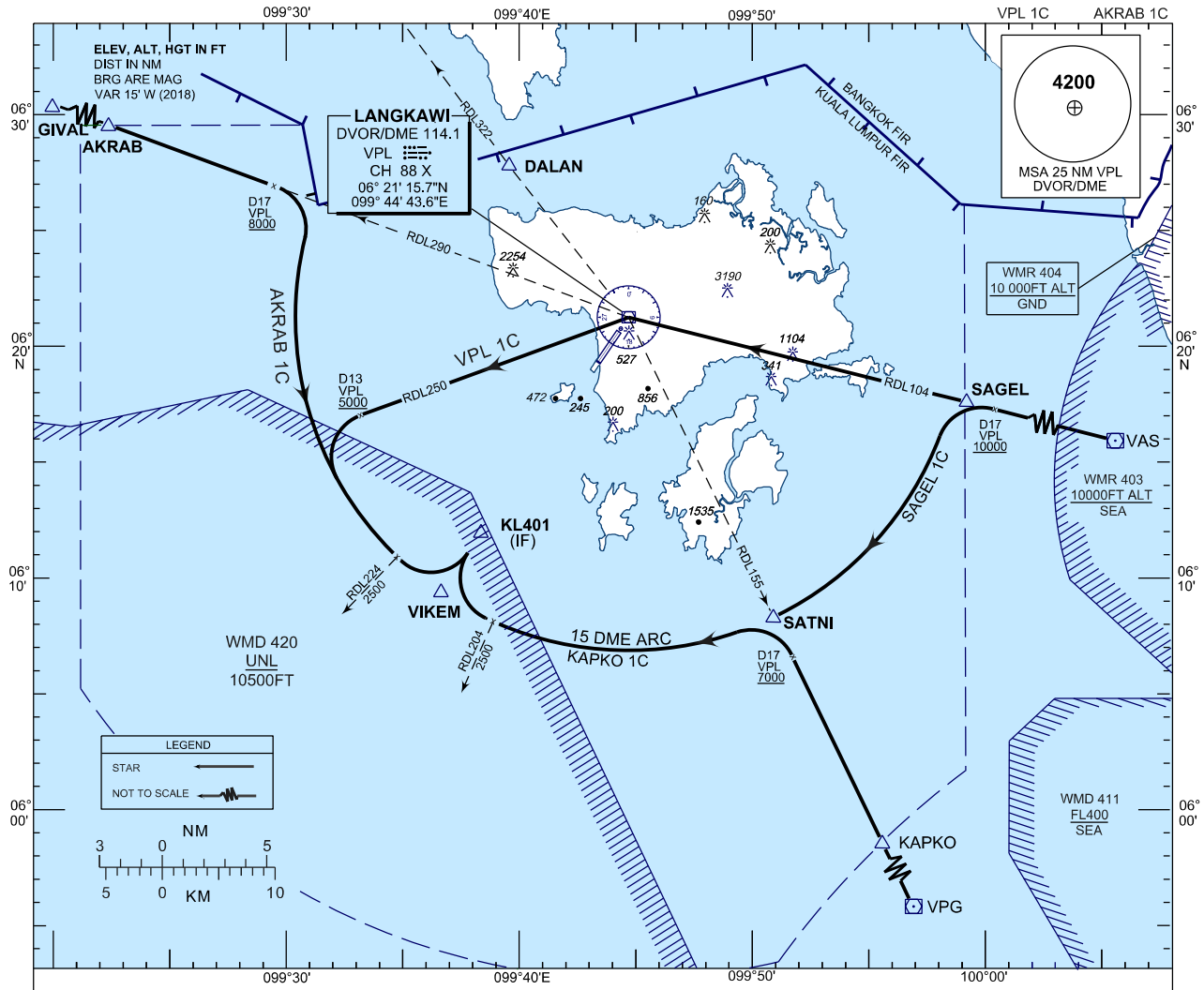
**STANDARD ARRIVAL CHART
INSTRUMENT (STAR) - ICAO**

**LANGKAWI / LANGKAWI
INTERNATIONAL AIRPORT (WMKL)
VOR/DME ARC RWY 03**

TRANSITION ALTITUDE
11000 FT

APP 119.4, 257.8
TWR 118.5
SMC 121.8
ATIS 128.2

SAGEL 1C KAPKO 1C
VPL 1C AKRAB 1C



COMMUNICATION FAILURE :

- SQUAWK 7600
- IF UNDER PILOT NAVIGATION, MAINTAIN LAST ASSIGNED LEVEL FOR 3 MINUTES, IF NO ONWARD CLEARANCE IS RECEIVED. SUBSEQUENTLY CLIMB TO COMPLY WITH STAR
- IF UNDER RADAR VECTORED : MAINTAIN VECTOR FOR 2 MINUTES, IF BELOW MSA, CLIMB TO MSA, THEN TRACK TO INTERCEPT CLEARED OR PREVIOUSLY ASSIGNED STAR TO DESTINATION.

DESIGNATOR	STAR DESCRIPTION
SAGEL 1 CHARLIE	FROM VAS VOR TRACK INBOUND ON RDL 104 VPL VOR. AT D17 VPL TURN LEFT TO JOIN 15 DME ARC VPL VOR FOR VOR/DME APCH OR ILS DME OR LOC/DME APP RWY 03.
KAPKO 1 CHARLIE	FROM VPG VOR TRACK INBOUND ON RDL 155 VPL VOR. AT D17 VPL TURN LEFT TO JOIN 15 DME ARC VPL VOR FOR VOR/DME APCH OR ILS DME OR LOC/DME APP RWY 03.
AKRAB 1 CHARLIE	FROM GIVAL TRACK INBOUND ON RDL 290 VPL VOR AT D17 VPL TURN RIGHT TO JOIN 15 DME ARC VPL VOR FOR VOR/DME APCH OR ILS DME OR LOC/DME APP RWY 03.
VPL 1 CHARLIE	FROM VAS VOR TRACK INBOUND ON RDL 104 VPL VOR AND JOIN RDL 250 VPL AT D13 VPL TURN LEFT TO JOIN 15 DME ARC VPL VOR FOR VOR/DME APCH OR ILS DME OR LOC/DME APP RWY 03.