

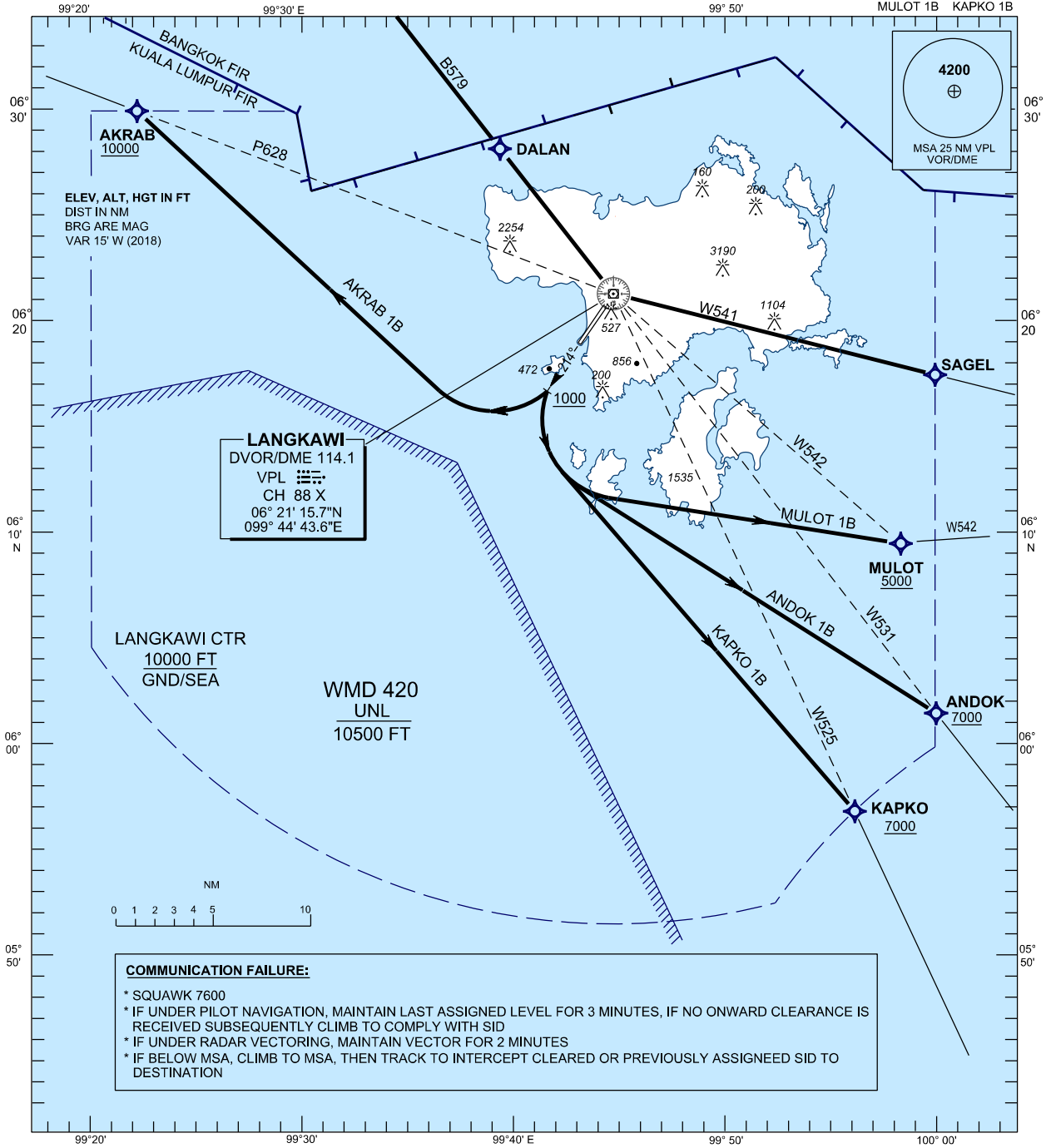
**STANDARD DEPARTURE CHART
INSTRUMENT (SID) - ICAO**

**LANGKAWI/LANGKAWI
INTERNATIONAL AIRPORT (WMKL)
RWY 21
RNAV1 DEPARTURES**

TRANSITION ALTITUDE
11000 FT

APP 119.4, 257.8
TWR 118.5
SMC 121.8
ATIS 128.2

AKRAB 1B ANDOK 1B
MULOT 1B KAPKO 1B



4200
MSA 25 NM VPL
VOR/DME

LANGKAWI
DVOR/DME 114.1
VPL
CH 88 X
06° 21' 15.7"N
099° 44' 43.6"E

LANGKAWI CTR
10000 FT
GND/SEA

WMD 420
UNL
10500 FT

COMMUNICATION FAILURE:

- * SQUAWK 7600
- * IF UNDER PILOT NAVIGATION, MAINTAIN LAST ASSIGNED LEVEL FOR 3 MINUTES, IF NO ONWARD CLEARANCE IS RECEIVED SUBSEQUENTLY CLIMB TO COMPLY WITH SID
- * IF UNDER RADAR VECTORED, MAINTAIN VECTOR FOR 2 MINUTES
- * IF BELOW MSA, CLIMB TO MSA, THEN TRACK TO INTERCEPT CLEARED OR PREVIOUSLY ASSIGNED SID TO DESTINATION