

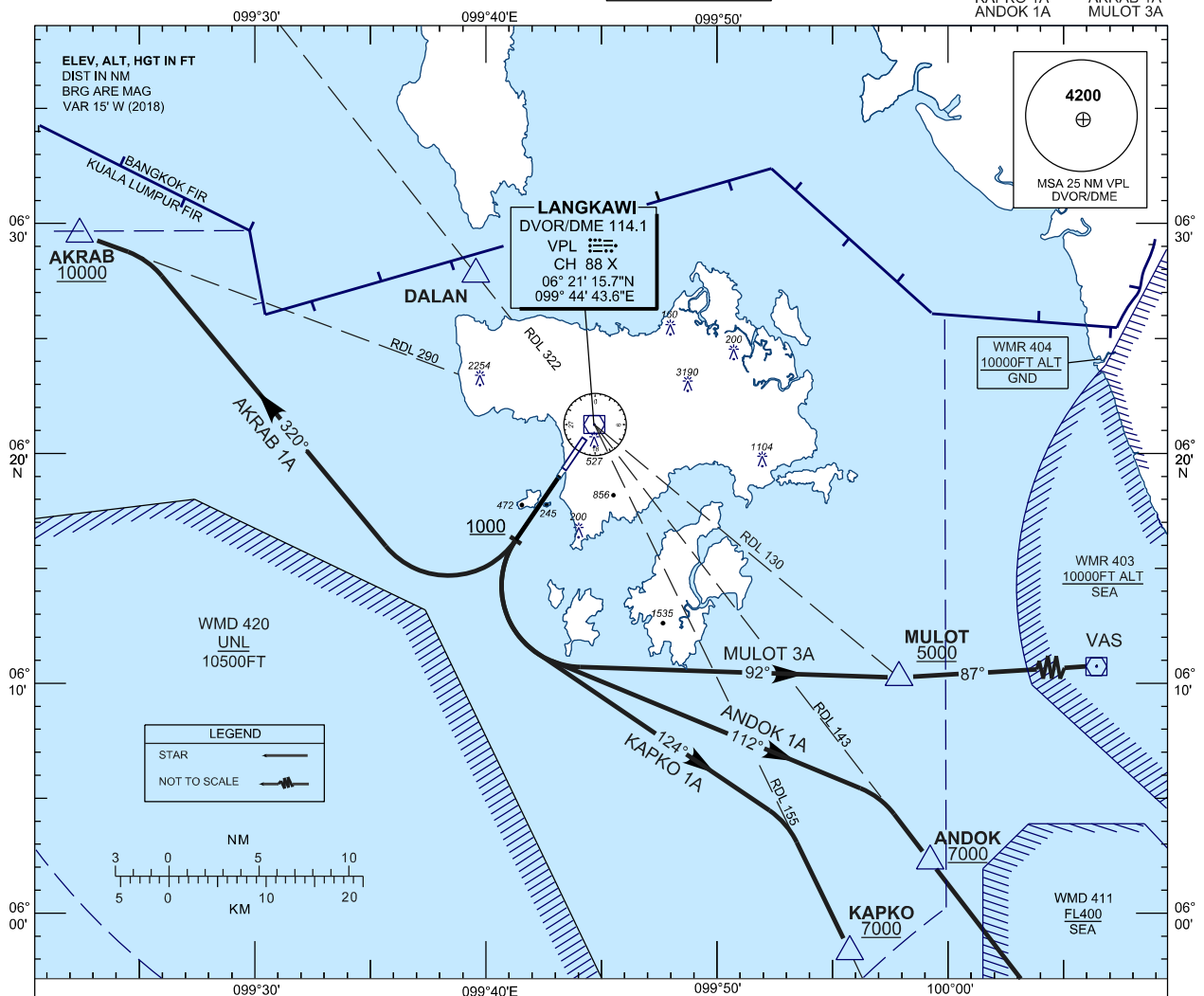
**STANDARD DEPARTURE CHART  
INSTRUMENT (SID) - ICAO**

**LANGKAWI / LANGKAWI  
INTERNATIONAL AIRPORT (WMKL)  
RWY 21**

TRANSITION ALTITUDE  
11000 FT

APP 119.4, 257.8  
TWR 118.5  
SMC 121.8  
ATIS 128.2

KAPKO 1A    AKRAB 1A  
ANDOK 1A    MULOT 3A



**COMMUNICATION FAILURE :**

SQUAWK 7600

- IF UNDER PILOT NAVIGATION, MAINTAIN LAST ASSIGNED LEVEL FOR 3 MINUTES, IF NO ONWARD CLEARANCE IS RECEIVED. SUBSEQUENTLY CLIMB TO COMPLY WITH SID.
- IF UNDER RADAR VECTORED : MAINTAIN VECTOR FOR 2 MINUTES, IF BELOW MSA, CLIMB TO MSA, THEN TRACK TO INTERCEPT CLEARED OR PREVIOUSLY ASSIGNED SID TO DESTINATION.

INITIAL CLIMB PROCEDURE	DESIGNATOR	SID DESCRIPTION
AFTER TAKE-OFF TRACK 214° AT 1000 TURN LEFT	<b>KAPKO 1 ALPHA</b>	TRACK 124° TO INTERCEPT RDL155 VPL VOR OUTBOUND TO KAPKO THEN W525
NOTE : MINIMUM CLIMB GRADIENT (PDG) 4.5% UNTIL 1000 FT	<b>ANDOK 1 ALPHA</b>	TRACK 112° TO INTERCEPT RDL143 VPL VOR OUTBOUND TO ANDOK THEN W531
	<b>MULOT 3 ALPHA</b>	TRACK 092° TO INTERCEPT RDL130 VPL VOR OUTBOUND TO MULOT THEN W542 TO VAS
AFTER TAKE-OFF TRACK 214° AT 1000 TURN RIGHT	<b>AKRAB 1 ALPHA</b>	TRACK 320° TO INTERCEPT RDL290 VPL VOR OUTBOUND TO AKRAB THEN P628