

**INSTRUMENT
APPROACH
CHART - ICAO**

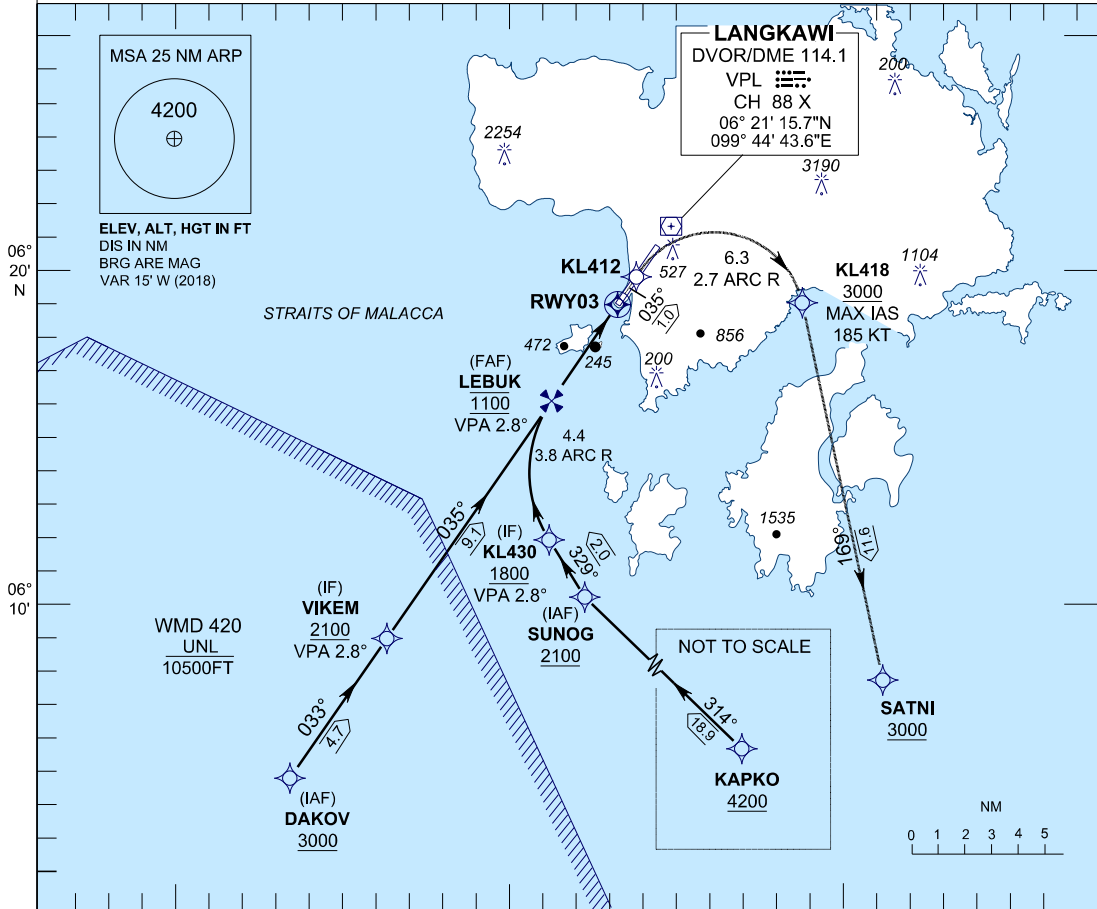
AERODROME ELEV 15 FT
HEIGHTS RELATED TO DISP
THR RWY 03 - ELEV 16 FT

APP	119.4
	257.8
TWR	118.5
SMC	121.8
ATIS	128.2

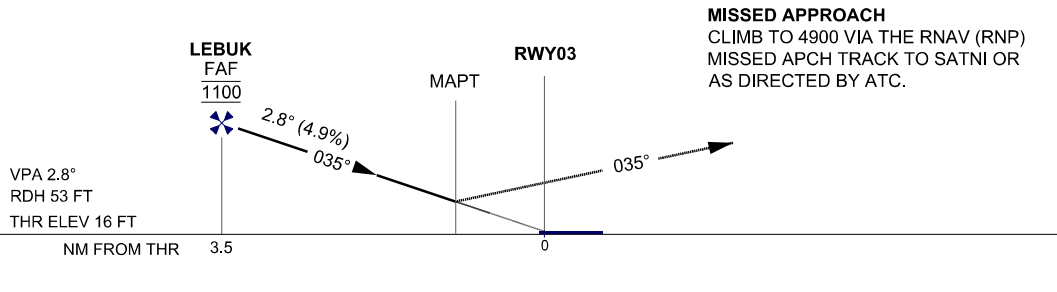
**LANGKAWI (WMKL)/ LANGKAWI
INTERNATIONAL AIRPORT
RWY 03**

RNAV (RNP) Z

- | | | |
|--|--|---------------------------------------|
| 1. AUTHORIZATION REQUIRED | 2. DUAL GNSS REQUIRED | 3. RF REQUIRED |
| 4. APPROACH NOT AUTHORIZED WHEN AIRPORT TEMPERATURE BELOW 20°C OR ABOVE 35°C | 6. WMKL ALTIMETER SETTING REQUIRED. | 8. TOGA TO NAV REQUIRED |
| 5. MISSED APPROACH REQUIRES BANK ANGLE OF UP TO 20° | 7. PAPI AND VERTICAL PATH ANGLE NOT COINCIDENT | 10. FOSA REQUIRED |
| 9. PROCEDURE REQUIRES RNP 0.3 FROM IAFS TO TANOB | 11. CLIMB GRADIENT OF 4.1% TO 4900 REQUIRED TO REACH TANOB | 12. MISSED APPROACH TURN PRIOR TO DER |



TRANSITION LEVEL FL 130
TRANSITION ALT 11000



MISSED APPROACH
CLIMB TO 4900 VIA THE RNAV (RNP)
MISSED APCH TRACK TO SATNI OR
AS DIRECTED BY ATC.

OCA/H	
ACFT CAT.	C D
RNP 0.3	845 (829)

GROUND SPEED - KT	70	90	100	120	140	160
RATE OF DESCENT (2.8°) (FEET/MIN)	347	446	495	594	693	792

DISTANCE TO THRESHOLD (NM)	3.5	3	2	1
ALTITUDE (FEET)	1100	960	670	370