

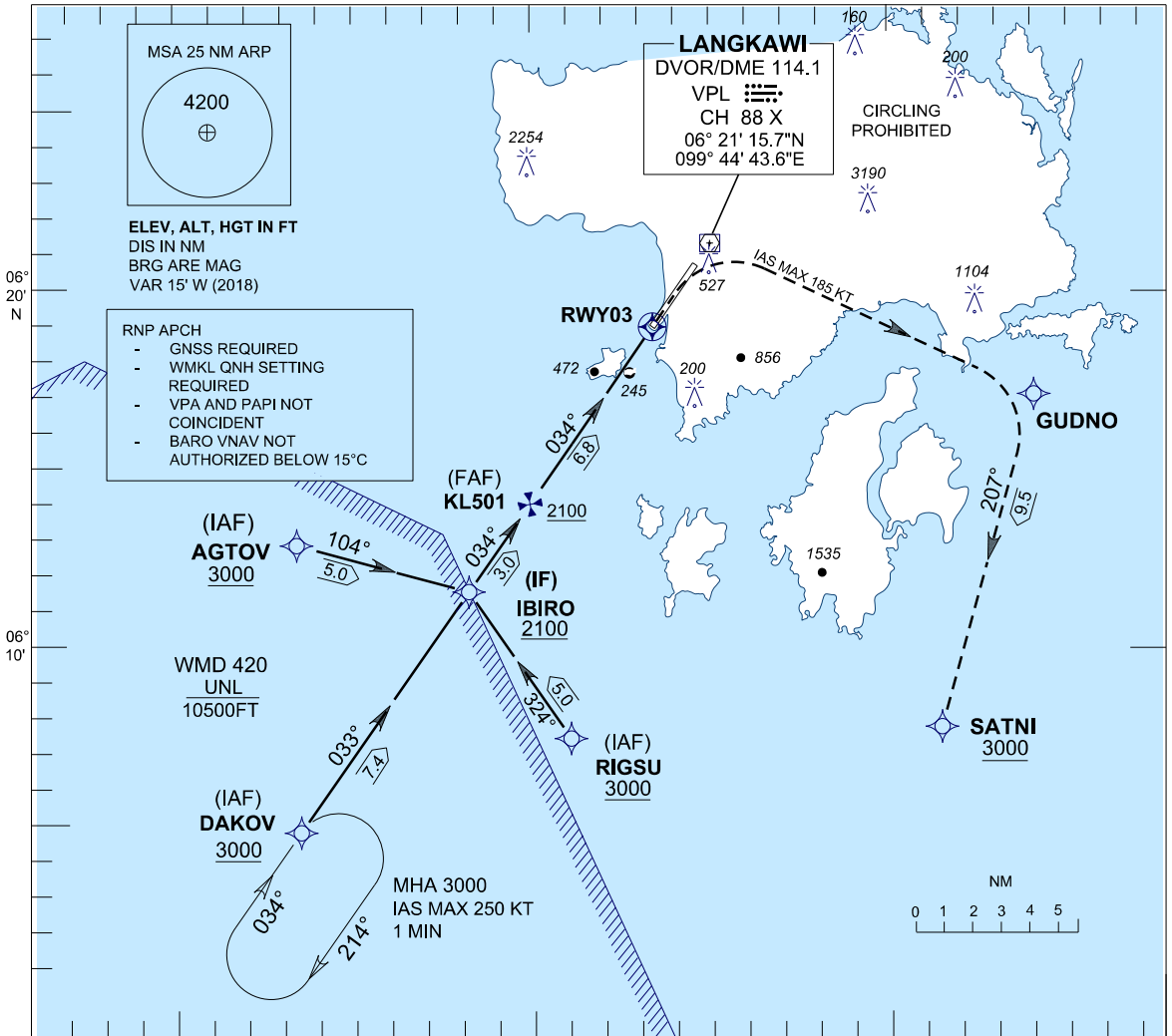
**INSTRUMENT
APPROACH
CHART - ICAO**

**AERODROME ELEV 15 FT
HEIGHTS RELATED TO DISP
THR RWY 03 - ELEV 16 FT**

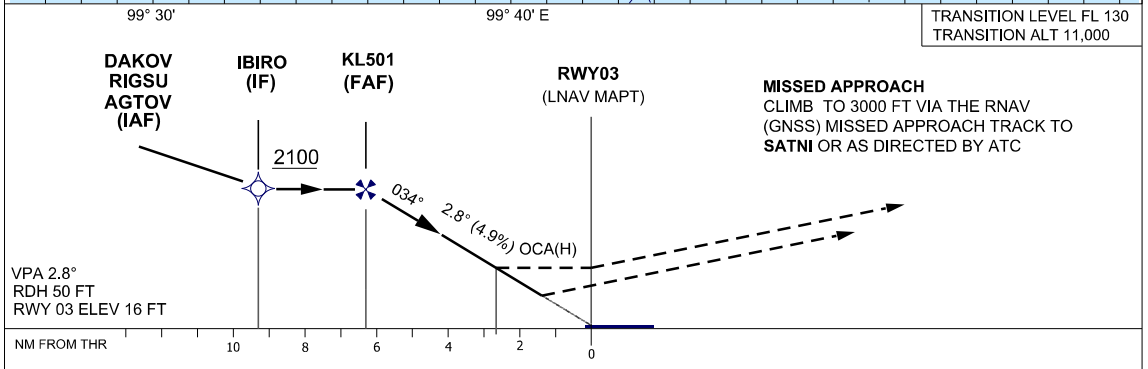
APP	119.4
	257.8
TWR	118.5
SMC	121.8
ATIS	128.2

**LANGKAWI (WMKL)/ LANGKAWI
INTERNATIONAL AIRPORT
RWY 03**

RNAV (GNSS) Y



TRANSITION LEVEL FL 130
TRANSITION ALT 11,000



	OCA (H) FT					
	A	B	C	D		
ACFT CATEGORY						
LNAV (STRAIGHT-IN)	880 (864) / 2.8NM TO THR					
LNAV/VNAV	865 (849)					
DISTANCE TO THR	6.6	6	5	4	3	2.8
ALTITUDE (FT)	2100 (2084)	1930 (1914)	1610 (1594)	1300 (1284)	980 (964)	890 (874)