

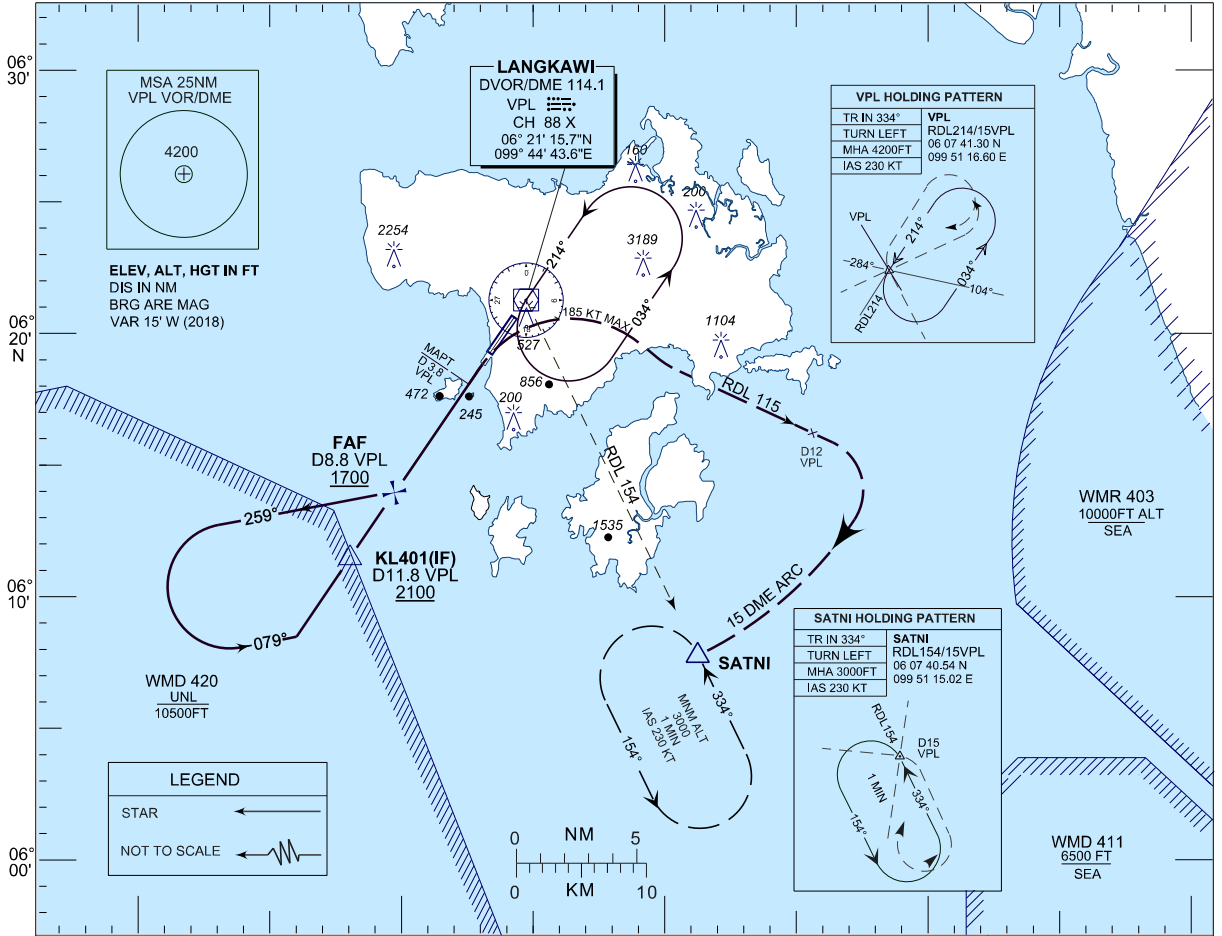
INSTRUMENT APPROACH CHART - ICAO

AERODROME ELEV 16 FT
 HEIGHT RELATED TO DISP
 THR RWY 03 - ELEV 16 FT
 ILS REF. DATUM 53 FT

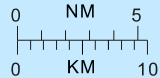
APP	119.4
	257.8
TWR	118.5
SMC	121.8
ATIS	128.2

LANGKAWI (WMKL) / LANGKAWI INTERNATIONAL AIRPORT RWY 03

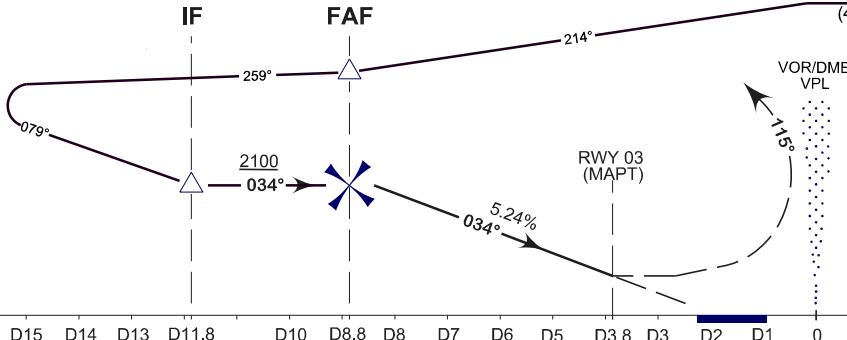
VOR Y
 (CAT A & B ONLY)



LEGEND	
STAR	←
NOT TO SCALE	←



099°30' 099°40'E 099°50' 100°00' 4200 (4184) TRANSITION LEVEL FL130 TRANSITION ALT 11000



MISSED APPROACH
 AT MAPT TURN RIGHT TO INTERCEPT RDL115 VPL
 CLIMB TO 3000 FT AT 12 DME
 VPL TURN RIGHT TO JOIN 15 DME ARC VPL AND HOLD AT SATNI OR AS DIRECTED BY ATC

CAUTION
 MISSED APPROACH TURN SPEED MAX IAS 185 KT

ELEV 16 FT (THR RWY 03)
 NM FROM DME VPL

OCA (OCH)	A	B	C	D
VOR/DME	810 (794)			

DME VPL	NM	8.8	7.8	6.8	5.8	4.8	3.8	2.8
DIST THR/RWY03	NM	6.3	5.3	4.3	3.3	2.3	1.3	0.3
ALTITUDE	FT	2070	1750	1430	1110	790	480	160

GS	KT	80	100	120	140	160	180
FAF03 - RWY03 (6.4NM)	MIN:SEC	4:48	3:50	3:12	2:45	2:24	2:08
RATE OF DESCEND(328.37FT/NM)	FT/MIN	430	540	650	760	860	970