

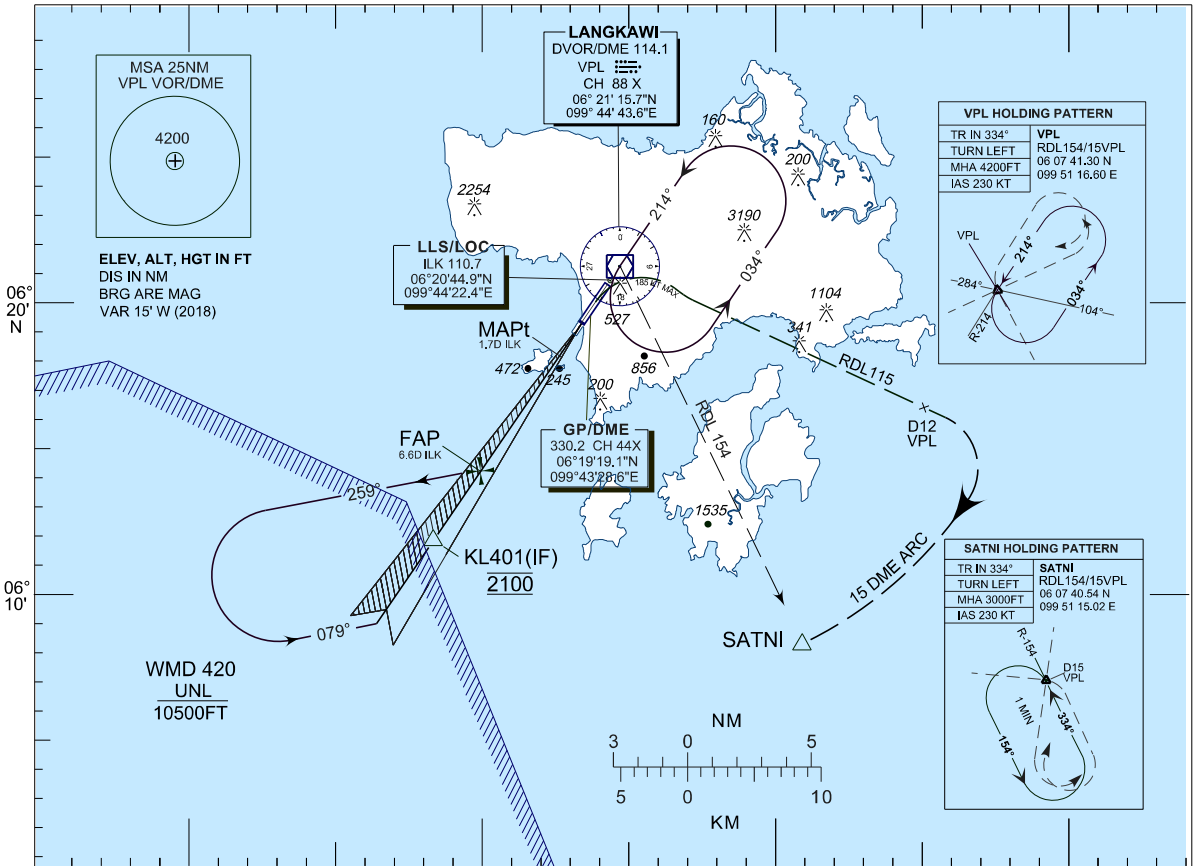
INSTRUMENT APPROACH CHART - ICAO

AERODROME ELEV 16 FT
 HEIGHT RELATED TO DISP
 THR RWY 03 - ELEV 16 FT
 ILS REF. DATUM 53 FT

APP	119.4
	257.8
TWR	118.5
SMC	121.8
ATIS	128.2

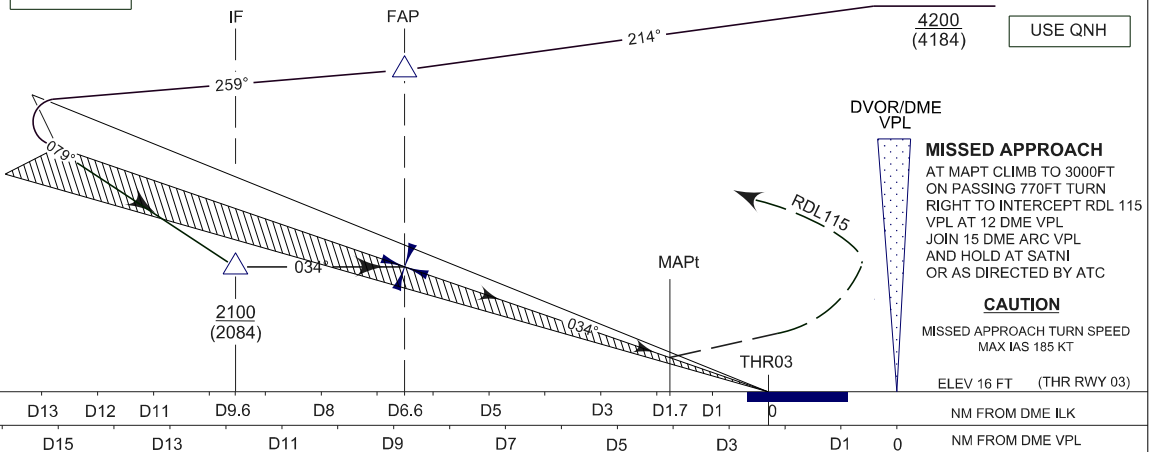
LANGKAWI (WMKL) / LANGKAWI INTERNATIONAL AIRPORT
RWY 03

ILS Y OR LOC Y
 (CAT A & B ONLY)



ILS RDH 53FT

TRANSITION LEVEL FL130
 TRANSITION ALT 11000



MISSED APPROACH
 AT MAPt CLIMB TO 3000FT
 ON PASSING 770FT TURN
 RIGHT TO INTERCEPT RDL 115
 VPL AT 12 DME VPL
 JOIN 15 DME ARC VPL
 AND HOLD AT SATNI
 OR AS DIRECTED BY ATC

CAUTION
 MISSED APPROACH TURN SPEED
 MAX IAS 185 KT
 ELEV 16 FT (THR RWY 03)

OCA (OCH)	A	B	C	D
ILS/DME CAT I		643 (627)		
LOC/DME		643 (627)		

DME ILK	NM	6.5	5.5	4.5	3.5	2.5	1.5	0.5
DIST THR/RWY03	NM	6.3	5.3	4.3	3.3	2.3	1.3	0.3
ALTITUDE	FT	2070	1750	1430	1120	810	500	190

GROUND SPEED	KT	80	100	120	140	160	180
FAP - RWY03 (6.4 NM)	MIN:SEC	4:48	3:50	3:12	2:45	2:24	2:8
RATE OF DESCEND(326.30FT/NM)	FT/MIN	430	540	650	760	870	970