

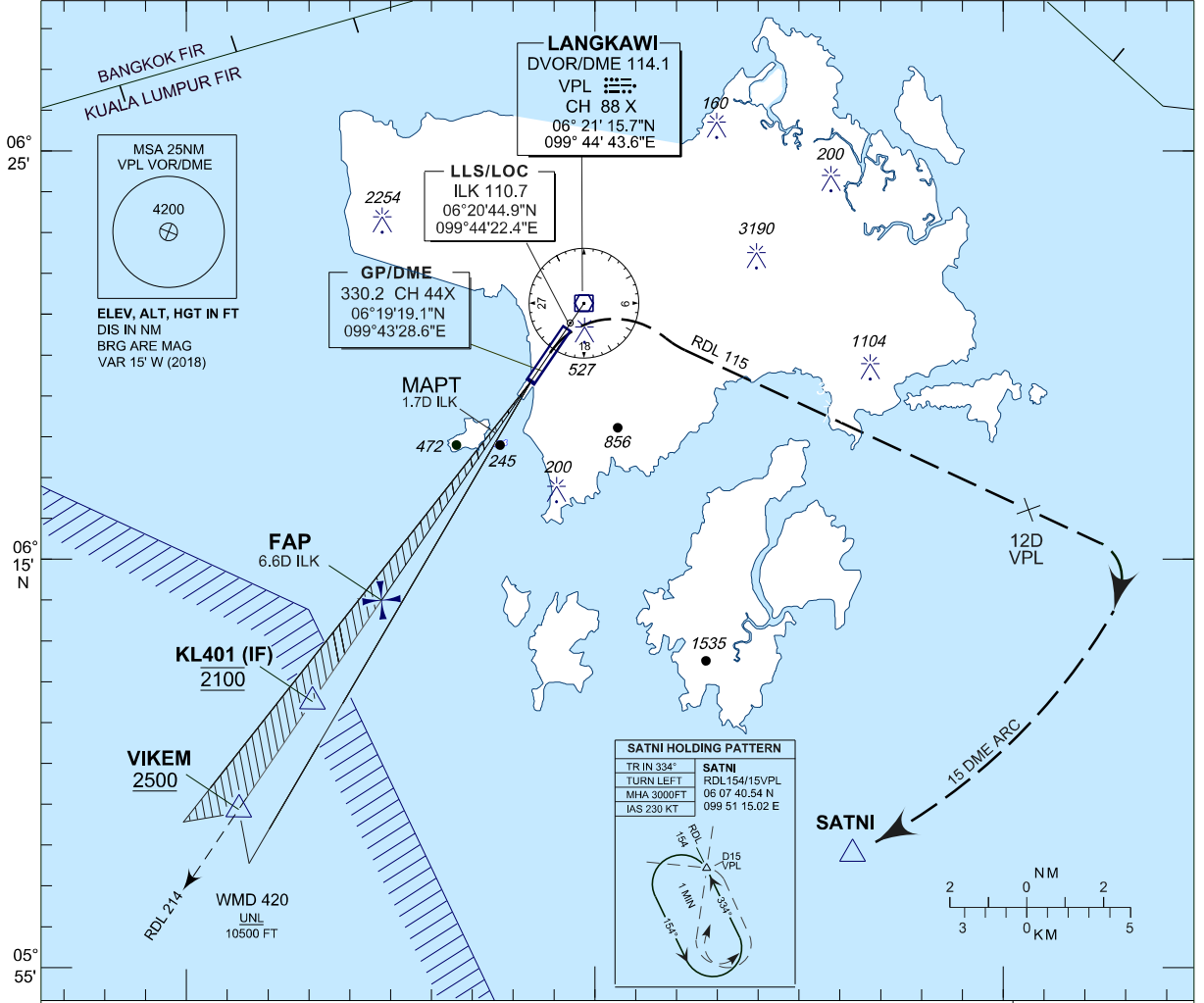
**INSTRUMENT
APPROACH
CHART - ICAO**

AERODROME ELEV 16 FT
HEIGHT RELATED TO DISP
THR RWY 03 - ELEV 16 FT
ILS REF. DATUM 53 FT

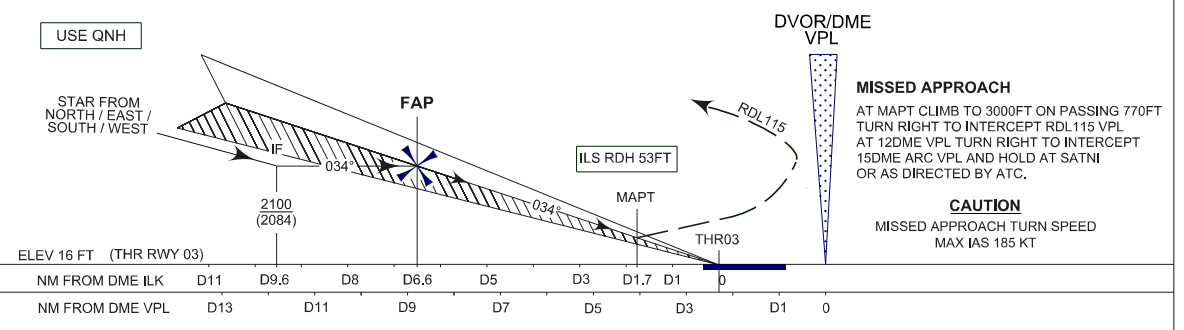
APP	119.4
	257.8
TWR	118.5
SMC	121.8
ATIS	128.2

**LANGKAWI (WMKL) / LANGKAWI
INTERNATIONAL AIRPORT
RWY 03**

ILS Z OR LOC Z



TRANSITION LEVEL FL130
TRANSITION ALT 11000



OCA (OCH)	A	B	C	D
ILS/DME CAT I	643 (627)			
LOC/DME	643 (627)			

DME ILK	NM	6.5	5.5	4.5	3.5	2.5	1.5	0.5
DIST THR/RWY03	NM	6.3	5.3	4.3	3.3	2.3	1.3	0.3
ALTITUDE	FT	2070	1750	1430	1120	810	500	190

GROUND SPEED	KT	80	100	120	140	160	180
FAP - RWY03 (6.4 NM)	MIN:SEC	4:48	3:50	3:12	2:45	2:24	2:8
RATE OF DESCEND(326.30FT/NM)	FT/MIN	430	540	650	760	870	970