

**STANDARD DEPARTURE CHART
INSTRUMENT (SID) - ICAO**

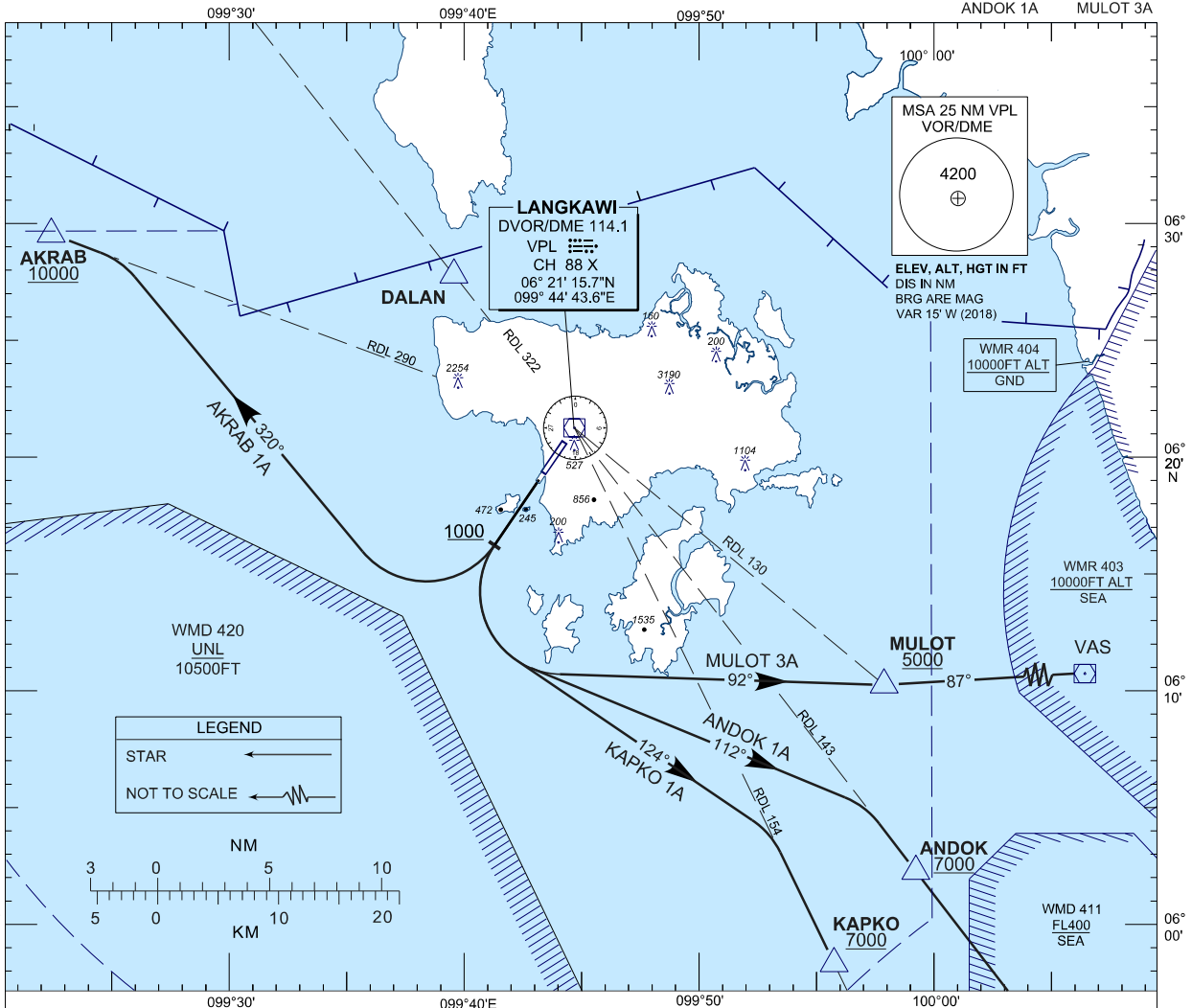
**LANGKAWI (WMKL) / LANGKAWI
INTERNATIONAL AIRPORT
RWY 21**

TRANSITION ALTITUDE
11000 FT

| | |
|------|-------|
| APP | 119.4 |
| | 257.8 |
| TWR | 118.5 |
| SMC | 121.8 |
| ATIS | 128.2 |

KAPKO 1A
ANDOK 1A

AKRAB 1A
MULOT 3A



COMMUNICATION FAILURE :

SQUAWK 7600

- IF UNDER PILOT NAVIGATION, MAINTAIN LAST ASSIGNED LEVEL FOR 3 MINUTES, IF NO ONWARD CLEARANCE IS RECEIVED. SUBSEQUENTLY CLIMB TO COMPLY WITH SID.
- IF UNDER RADAR VECTORING : MAINTAIN VECTOR FOR 2 MINUTES, IF BELOW MSA, CLIMB TO MSA, THEN TRACK TO INTERCEPT CLEARED OR PREVIOUSLY ASSIGNED SID TO DESTINATION.

| INITIAL CLIMB PROCEDURE | DESIGNATOR | SID DESCRIPTION |
|--|----------------------|---|
| AFTER TAKE-OFF TRACK 214° AT 1000 TURN LEFT | KAPKO 1 ALPHA | TRACK 124° TO INTERCEPT RDL154 VPL VOR OUTBOUND TO KAPKO THEN W525 |
| NOTE : MINIMUM CLIMB GRADIENT (PDG) 4.5% UNTIL 1000 FT | ANDOK 1 ALPHA | TRACK 112° TO INTERCEPT RDL143 VPL VOR OUTBOUND TO ANDOK THEN W531 |
| | MULOT 3 ALPHA | TRACK 090° TO INTERCEPT RDL130 VPL VOR OUTBOUND TO MULOT THEN W542 TO VAS |
| AFTER TAKE-OFF TRACK 214° AT 1000 TURN RIGHT | AKRAB 1 ALPHA | TRACK 320° TO INTERCEPT RDL290 VPL VOR OUTBOUND TO AKRAB THEN P628 |