

**WMKP AD 2.19 RADIO NAVIGATION AND LANDING AIDS**

Type and aid	ID	Frequency	Hours of operation	Coordinates	DME Elevataion	Remarks
1	2	3	4	5	6	7
ILS/LLZ	IPG	109.9 MHZ	H24	051840.7N 1001725.4E	-	Alignment 042° / 222°
GP/DME	-	333.8 MHZ CH 36X		051716.7N 1001613.4E	-	G/P 3°. DME located at G/P.
L / NDB	PNG	406 KHZ		051934.7N 1001807.4E	-	042° MAG / 1.42 NM to THR RWY 22. 65W.
DVOR/DME	VPG	116.2 MHZ CH 109X		051646.7N 1001537.4E	-	222° MAG / 0.53 NM to THR RWY 04.

**WMKP AD 2.20 LOCAL TRAFFIC REGULATIONS****1. Local Flying Restrictions**

- a) Right hand circuit Runway 04  
Left hand circuit Runway 22
- b) Circuit height
  - light acft 1000 FT within 5 NM radius of the ARP.
  - other acft 1500 FT within 7 NM radius of the ARP.
- c) Circling prohibited in sector 250° - 020° due to high terrain.

**WMKP AD 2.21 NOISE ABATEMENT PROCEDURES**

NIL

## WMKP AD 2.22 FLIGHT PROCEDURES

### 1 DME Arrival Procedures For Penang International Airport.

RADIAL/TRACK	NAVAID	DME CHECK POINT	MNM IFR EN-ROUTE ALTITUDE	AFTER Passing ..... DME/VPG DESCEND to ..... FT on QNH			REMARKS
RDL 009 (ALFA 457)	VPG	Not Required	7000 FT	33 ↓ 5500	24 ↓ 4000		Make one of the following approaches as directed by ATC :-  i) 10 DME ARC VPG or ii) 15 DME ARC VPG or iii) Over VPG, carry out Standard Instrument Approach Procedure
RDL 066 (BRAVO 219)	VPG	Not Required	FL 140	38 ↓ 7500	27 ↓ 4000		
RDL 130 (WHISKEY 530)	VPG	Not Required	7000 FT	25 ↓ 5100	12 ↓ 4500	8 ↓ 4000	
RDL 155 (ALFA 457)	VPG	Not Required	7000 FT	25 ↓ 5100	12 ↓ 4500	8 ↓ 4000	
RDL 224 (GOLF 468)	VPG	Not Required	9000 FT	17 ↓ 4000			
RDL 335 (WHISKEY 525)	VPG	Not Required	7000 FT	17 ↓ 4000			

---

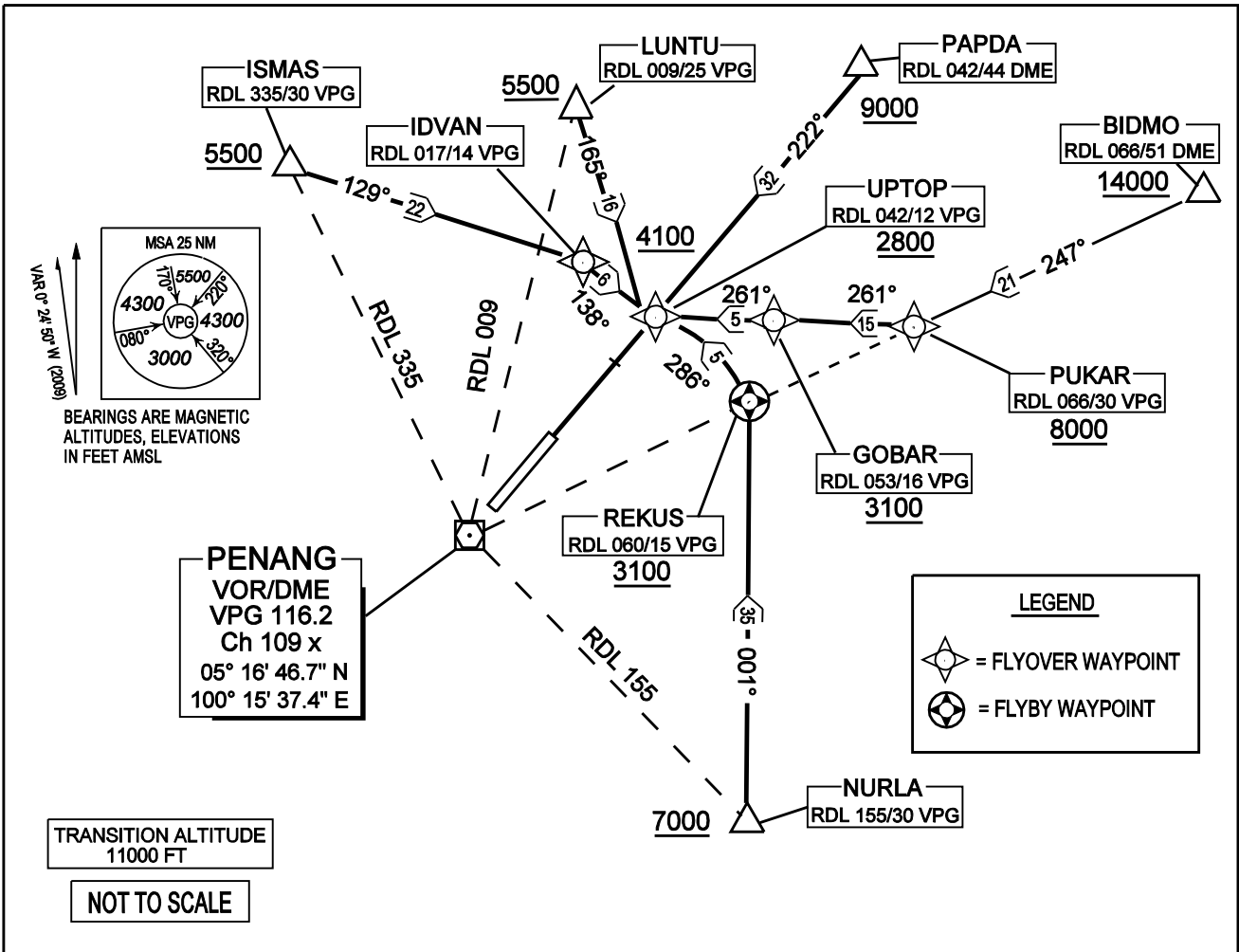
**WMKP AD 2.23 ADDITIONAL INFORMATION**
**1 List Of Way-points.**

- 1.1 The following list contains the way-points related to SID, RNAV STAR and IAP procedures at Penang International Airport.

ID	REFERENCE FM VKG VOR/DME	LATITUDE(N)	LONGITUDE (E)	REMARKS
LUNTU	RDL 009/25D	05 41 35.9	100 19 20.1	
ISMAS	RDL 335/30D	05 43 59.0	100 02 36.8	
BIDMO	RDL 066/51D	05 36 59.6	101 02 28.4	
IKILO	RDL 130/35D	04 54 09.0	100 42 30.5	
MADUM	RDL 224/25D	04 58 08.7	099 58 14.0	
PUKAR	RDL 066/30D	05 28 42.9	100 43 14.2	
ENDOR	RDL 103/09D	05 14 40.9	100 24 28.2	
NURLA	RDL 155/30D	04 49 07.7	100 28 03.2	
MEKAT	RDL 197/12D	05 05 14.2	100 12 07.3	
OPOVI	RDL 246/12D	05 11 52.8	100 04 38.4	
TAMIT	RDL 288/08D	05 19 13.8	100 08 02.1	
REKUS	RDL 060/15D	05 24 17.7	100 28 39.6	Flyover
GOBAR	RDL 053/16D	05 26 24.6	100 28 28.1	
UPTOP	RDL 042/12D	05 25 43.0	100 23 43.3	
IDVAN	RDL 017/14D	05 30 11.7	100 19 45.3	
PAPDA	RDL 042/44D	05 49 29	100 45 13	

TWR	121.1
SMC	121.6

**PENANG / PENANG**  
**RWY 22**



**RWY 22**

**ISMAS 1B ARRIVAL**

- \* FROM ISMAS TRACK 129° TO IDVAN
- \* THEN TURN RIGHT TRACK 138° TO UPTOP

**LUNTU 1B ARRIVAL**

- \* FROM LUNTU TRACK 165° TO UPTOP

**PAPDA 1B ARRIVAL**

- \* FROM PAPDA TRACK 222° TO UPTOP

**NURLA 1B ARRIVAL**

- \* FROM NURLA TRACK 001° TO REKUS
- \* THEN TURN LEFT TO 286° TO UPTOP

**BIDMO 1B ARRIVAL**

- \* FROM BIDMO TRACK 247° TO PUKAR
- \* THEN TURN RIGHT TRACK 261° TO GOBAR AND UPTOP

**VERTICAL RESTRICTION**

ADHERE TO VERTICAL RESTRICTION eg : 8000 = NOT BELOW 8000 FT (STAR STEPS) ON DESCENT UNLESS SPECIFICALLY CANCELLED

NOTE : INTERCEPT RDL 042 FOR VOR/DME APPROACH RUNWAY 22