

## WBKK AD 2.1 AERODROME LOCATION INDICATOR AND NAME

### WBKK - KOTA KINABALU INTERNATIONAL

## WBKK AD 2.2 AERODROME GEOGRAPHICAL AND ADMINISTRATIVE DATA

1	ARP coordinates and site at AD	LAT 055641N LONG 116031E Site: Northern edge of apron Terminal 2., approximately 2127m north of Tower.
2	Direction and distance from city	7 KM (3.7 NM) brg 170° fm General Post Office.
3	Elevation / Reference temperature	10 FT (3.05 M) / 30.7° C
4	Geoid Undulation (ARP)	+46.923 M
5	MAG VAR / Annual change	10 min 05 sec East (2010)
6	AD Administration, address, telephone, telefax, telex, AFS	Operator : <b>Malaysia Airports Sdn. Bhd.</b> Kota Kinabalu International Airport 88740 Kota Kinabalu Sabah. Tel : 088-238555 Fax : 088-219081  ATC Services : <b>Department of Civil Aviation Malaysia</b> Bangunan ATCC Jalan Kepayan 88618 Kota Kinabalu Sabah. Tel : 088-224911 Fax : 088-219198
7	Types of traffic permitted (IFR/VFR)	IFR / VFR
8	Remarks	Nil

## WBKK AD 2.3 OPERATIONAL HOURS

1	AD Administration	H24
2	Customs and immigration	H24
3	Health and sanitation	Mon - Fri : 0000 - 0815 Sat : 0000 - 0445
4	AIS Briefing Office	H24
5	ATS Reporting Office (ARO)	H24
6	MET Briefing Office	H24
7	ATS	H24
8	Fuelling	PETRONAS Refuelling : 2100 - 1300 SHELL Refuelling : 2100 - 1230
9	Handling	Prior arrangement.
10	Security	H24
11	De-icing	Nil
12	Remarks	Nil

### WBKK AD 2.4 HANDLING SERVICES AND FACILITIES

1	Cargo handling facilities	By arrangement with Malaysia Airlines and Transmile Air.
2	Fuel / Oil types	Fuel : JET A1
3	Fuelling facilities / capacity	Refuelling by bowser. (Refuelling by bowser and served by 6 bowzers each 4000 IG and 2 trailers each 6000 IG.
4	De-icing facilities	Nil
5	Hanger space available for visiting aircraft	Nil
6	Repair facilities for visiting aircraft	By prior arrangement through agents.
7	Remarks	Nil

### WBKK AD 2.5 PASSENGER FACILITIES

1	Hotels	Hotels in town.
2	Restaurants	Level 2 and 3 of the terminal building.
3	Transportation	Taxi services.
4	Medical facilities	Airport clinic - emergency service and minor curative treatment avbl. General Hospital fully equipped, 5 KM fm airport.
5	Bank and Post Offices	Teller Machines and Post Office avbl.
6	Tourist Office	Nil
7	Remarks	Nil

### WBKK AD 2.6 RESCUE AND FIRE FIGHTING SERVICES

1	AD category for fire fighting	Required : CAT 9 Available : CAT 9
2	Rescue equipment	Type of Vehicle : a) Rapid Intervention Vehicle b) Ultra Large Foam Tender I c) Ultra Large Foam Tender II d) Ultra Large Foam Tender III e) Ultra Large Foam Tender IV
3	Capability for removal of disabled aircraft	a) Pneumatic air bags aircraft recovery kit up to A320. b) To outsource local Heavy Duty Crane when necessary (alternative)
4	Remarks	Actual Fire Agent available = 35,000 litres

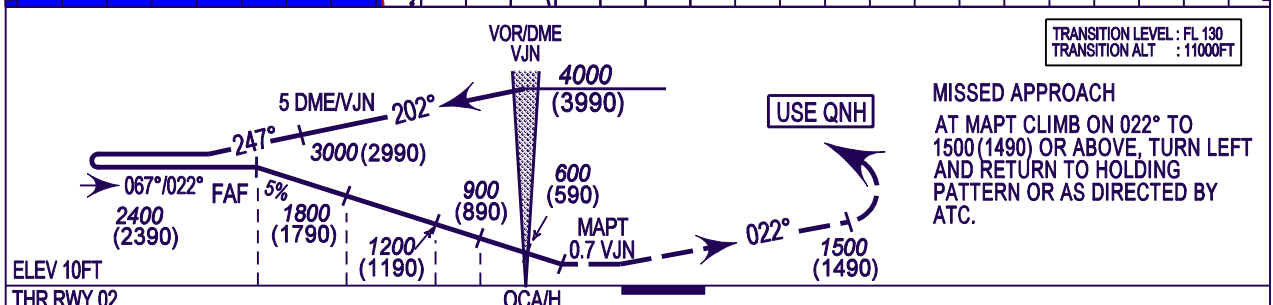
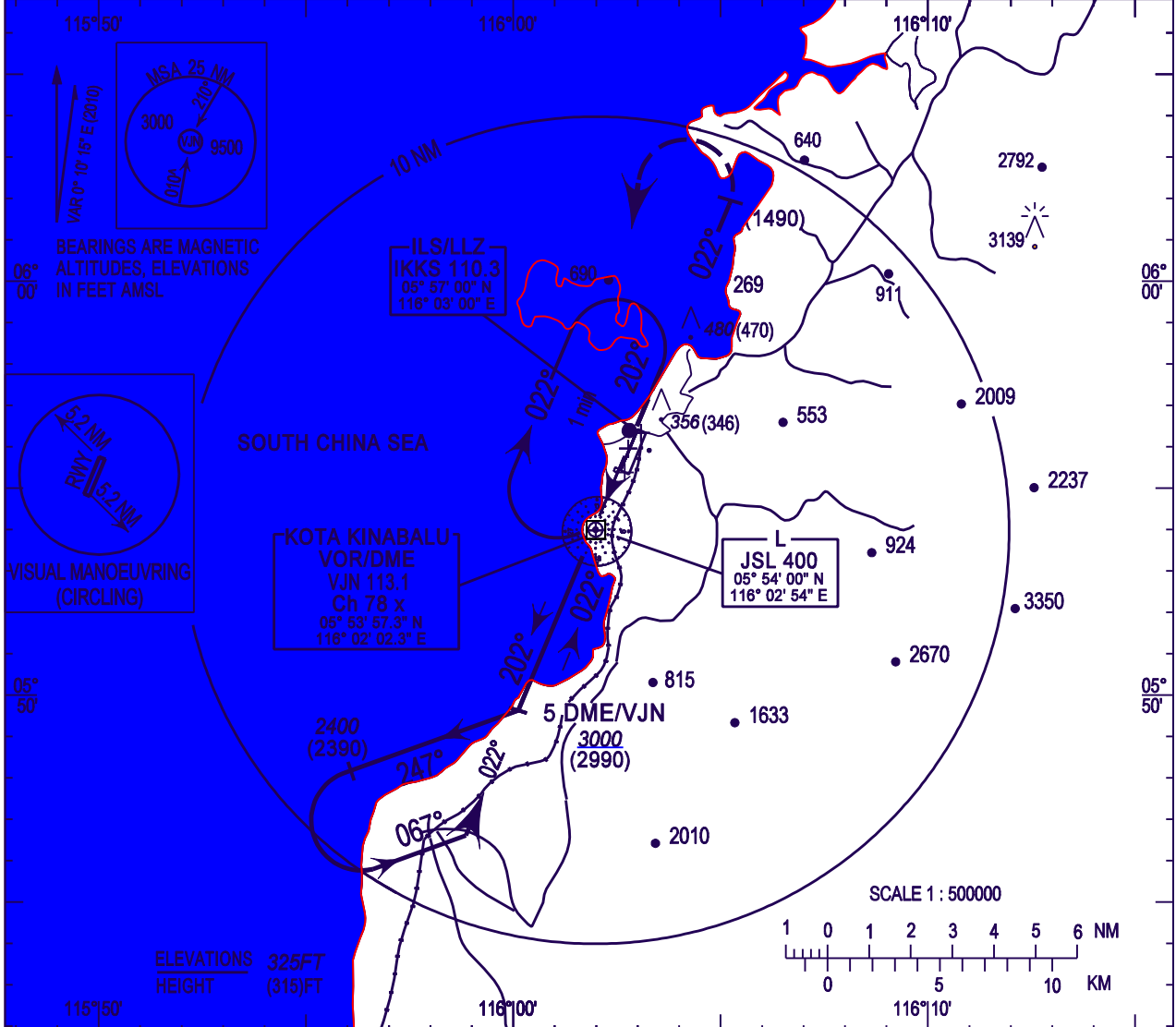
### WBKK AD 2.7 SEASONAL AVAILABILITY - CLEARING

NOT APPLICABLE

**INSTRUMENT APPROACH  
CHART - ICAO**

WBKK AD 2 - 87

AD ELEV 10FT HEIGHTS RELATED TO THR RWY 02-ELEV 10FT	SMC	121.6	<b>KOTA KINABALU/KOTA KINABALU VOR/DME RWY 02</b>
	TWR	118.3	
	APP	119.1	
	ATIS	127.4	



OCA (OCH)						
CATEGORY OF AIRCRAFT	A	B	C	D		
STRAIGHT IN APPROACH	450 (440)					
CIRCLING	800 (790)	1150 (1140)	1450 (1440)			
CAUTION :	-					
TIME TO THRESHOLD RUNWAY 02 FROM FAF DISTANCE 7.9 NAUTICAL MILES						
GROUND SPEED (KT)	70	90	120	150	180	210
MINUTES : SECONDS	6:45	5:16	3:57	3:10	2:38	2:15
5% DESCENT (FT/MIN)	348	446	595	741	893	1044