

---

# AIP SUPPLEMENT MALAYSIA

PHONE : 6-03-8871 4000  
TELEX : PENAWA MA 30128  
FAX : 6-03-8881 0530  
AFTN : WMKKYAYS  
COMM : AIRCIVIL  
KUALA LUMPUR

AERONAUTICAL INFORMATION SERVICES  
DEPARTMENT OF CIVIL AVIATION  
NO. 27, PERSIARAN PERDANA  
LEVEL 1-4, PODIUM BLOCK, PRECINCT 4,  
62618 PUTRAJAYA  
MALAYSIA

09 / 2011  
03 JUN

---

## KOTA KINABALU FLIGHT INFORMATION REGION

### KOTA KINABALU INTERNATIONAL AIRPORT WORK SCHEDULE AND MOVEMENT AREAS RESTRICTIONS

#### 1. INTRODUCTION

- 1.1 The Kota Kinabalu International Airport is currently undergoing an upgrading program. It involves the extension of runway, extension of the parallel taxiway, introduction of new intersection taxiways and expansion of Main Apron and Low Cost Carrier (LCC) Apron. The works also include the relocation of existing and introduction of new visual and non-visual navigational aids. A new Air Traffic Control Tower, a new LCC Terminal and expansion of the Main Terminal will also be part of this program.
- 1.2 This AIP Supplement supersedes the previously published AIP Supplement 03/2011 dated 27 January 2011.

#### 2. PURPOSE

- 2.1 The purpose of this AIP Supplement is to notify the aviation industry of the works schedule and the changes and the restrictions on the movement areas at Kota Kinabalu International Airport during this upgrading program. These includes partial closures of the runway, closures to portion[s] of taxiway[s], closures to portion[s] of the apron and aircraft parking stand as well as taxiing routes provided for arriving aircrafts and departing aircrafts at any particular phase of the upgrading program.

#### 3. WORKS SCHEDULE [see Appendix A-D]

- 3.1 The works schedule is basically divided into four [4] works phases –

<b>Phase 1</b>	:	Main Works: A. LCC Terminal and Landside Facilities B. Sea Reclamation C. Perimeter Road and Security Fencing D. Drainage E. New Southern Rapid Exit Taxiway F. Main Terminal Apron Expansion/Rehabilitation G. Parallel Taxiway Extension [Northern portion] H. AGL I. New DCA Control Tower
<b>Phase 2</b>	:	Main Works: A. LCC Terminal, LCC Apron and associated Taxiways B. Sea Reclamation C. Perimeter Road and Security Fencing D. Drainage F. Main Terminal Apron Expansion/Rehabilitation G. Parallel Taxiway Extension [Northern portion] H. AGL J. Runway K. Taxiway J and Threshold Runway 02
<b>Phase 3</b>	:	Main Works: A. LCC Terminal, LCC Apron and associated Taxiways B. Sea Reclamation C. Perimeter Road and Security Fencing D. Drainage F. Main Terminal Apron Expansion G. Parallel Taxiway Extension [Northern portion] H. AGL J. Runway L. Runway Extension (Southern portion) M. Parallel Taxiway Extension (Southern portion) N. Taxiway G and Taxiway F O. Precision Approach Lighting System Runway 02
<b>Phase 4</b>	:	Main Works: A. LCC Terminal, LCC Apron and associated Taxiways B. Sea Reclamation C. Perimeter Road and Security Fencing D. Drainage F. Main Terminal Apron Expansion G. Parallel Taxiway Extension [Northern portion] H. AGL J. Runway L. Runway Extension (Southern portion) M. Parallel Taxiway Extension (Southern portion) N. Taxiway G and Taxiway F O. Precision Approach Lighting System Runway 02 P. Parallel Taxiway Q. Runway Threshold 20 R. Precision Approach Lighting System Runway 20

## **4. AVAILABILITY OF MOVEMENT AREAS**

### **4.1 FULL RUNWAY CLOSURE**

4.1.1 Full closure of the runway and taxiways will be affected daily between 1710 – 2210 UTC [0110 – 0610 local time].

### **4.2 PARTIAL RUNWAY CLOSURE**

4.2.1 Partial closure of the runway will be affected during the works phases.

4.2.2 Available runway lengths during the works phases for departing aircrafts and arriving aircrafts are indicated in **Appendix E – J**.

### **4.3 TAXIWAY CLOSURES AND TAXIING ROUTES**

4.3.1 Certain taxiways will be closed during the works phases. No aircraft movement through these taxiways is allowed.

4.3.2 Available taxiways during the works phases for departing aircrafts and arriving aircrafts are indicated in **Appendix E – J**.

### **4.4 AIRCRAFT PARKING STAND CLOSURES**

4.4.1 Certain aircraft parking stands will be closed during the works phases.

4.4.2 General information on available aircraft parking stands during the works phases are indicated in **Appendix E – J**.

## **5. AVAILABILITY OF VISUAL AIDS**

5.1 Visual aids, markings and lightings, will be available for portions of the movement areas and aircraft parking stands which are opened to aircraft operations.

5.2 The approach lighting system for Runway 02 and Runway 20 will be downgraded during certain works phases

## **6. AVAILABILITY OF NON-VISUAL AIDS**

6.1 The approach and landing non-visual aids for Runway 02 and Runway 20 will be downgraded during certain works phases.

## **7. TRAFFIC REGULATION AND RESTRICTIONS**

7.1 No aircraft movement is allowed at closed portions of the runway, taxiways and apron.

7.2 The routes to be used by aircraft when taxiing for departure or on arrival will be specified by air traffic control. The issuance by air traffic control of a taxi route to an aircraft does not relieve the pilot-in-command of the responsibility to maintain separation with other aircraft on the movement area or to comply with air traffic control directions intended to regulate aircraft on the manoeuvring area.

**8. IMPLEMENTATION**

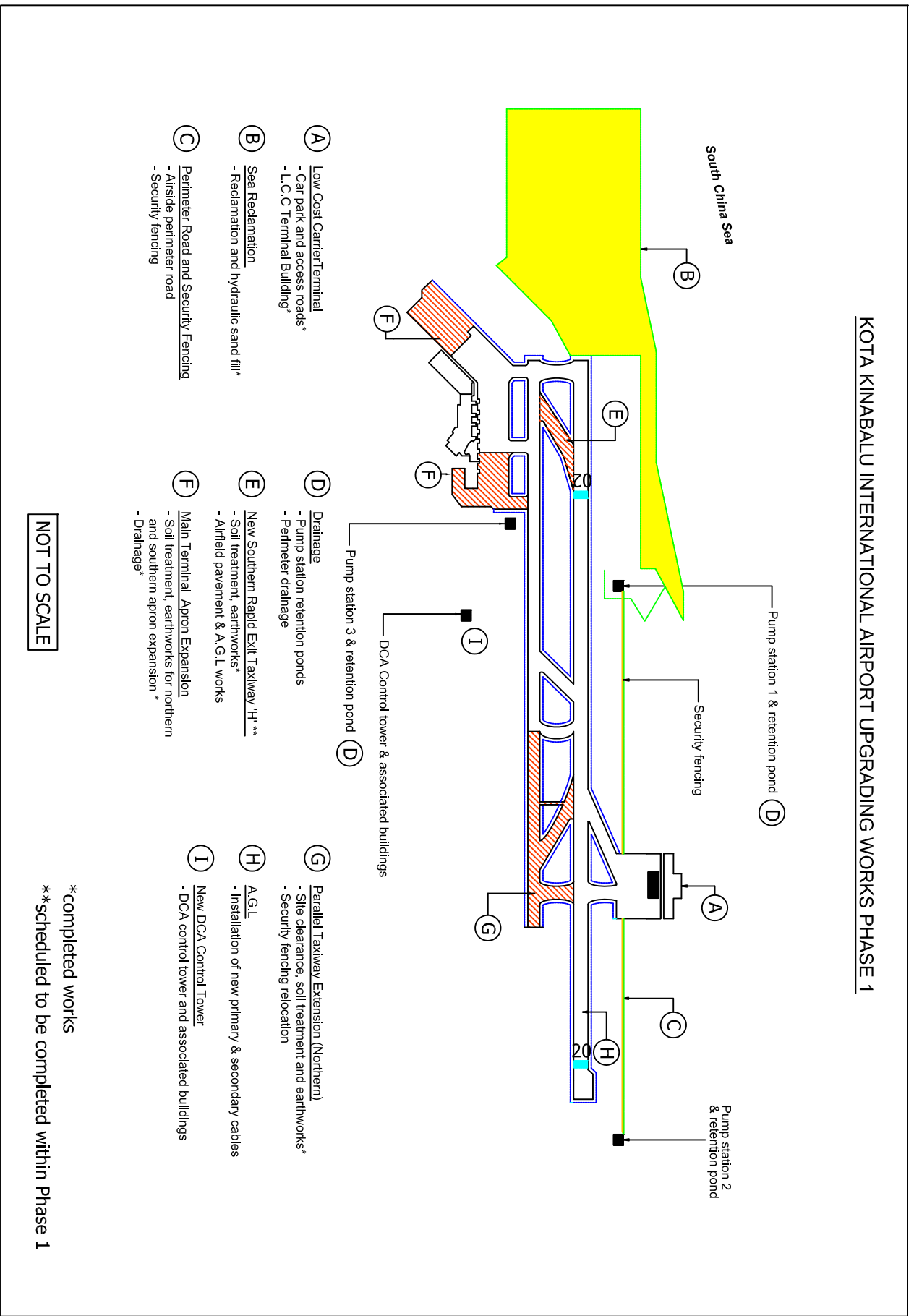
- 8.1 This AIP Supplement and relevant charts will be applicable during the whole of the upgrading program.
- 8.2 NOTAM will be issued notifying the effective dates of the movement area closures, aircraft parking stand closures and the downgrading of visual and non-visual aids.

**9. CANCELLATION**

- 9.1 This AIP Supplement will remain current until the upgrading works has completed.

**DATO' AZHARUDDIN ABDUL RAHMAN**  
**Director General**  
**Department of Civil Aviation**  
**Malaysia**

KOTA KINABALU INTERNATIONAL AIRPORT UPGRADING WORKS PHASE 1

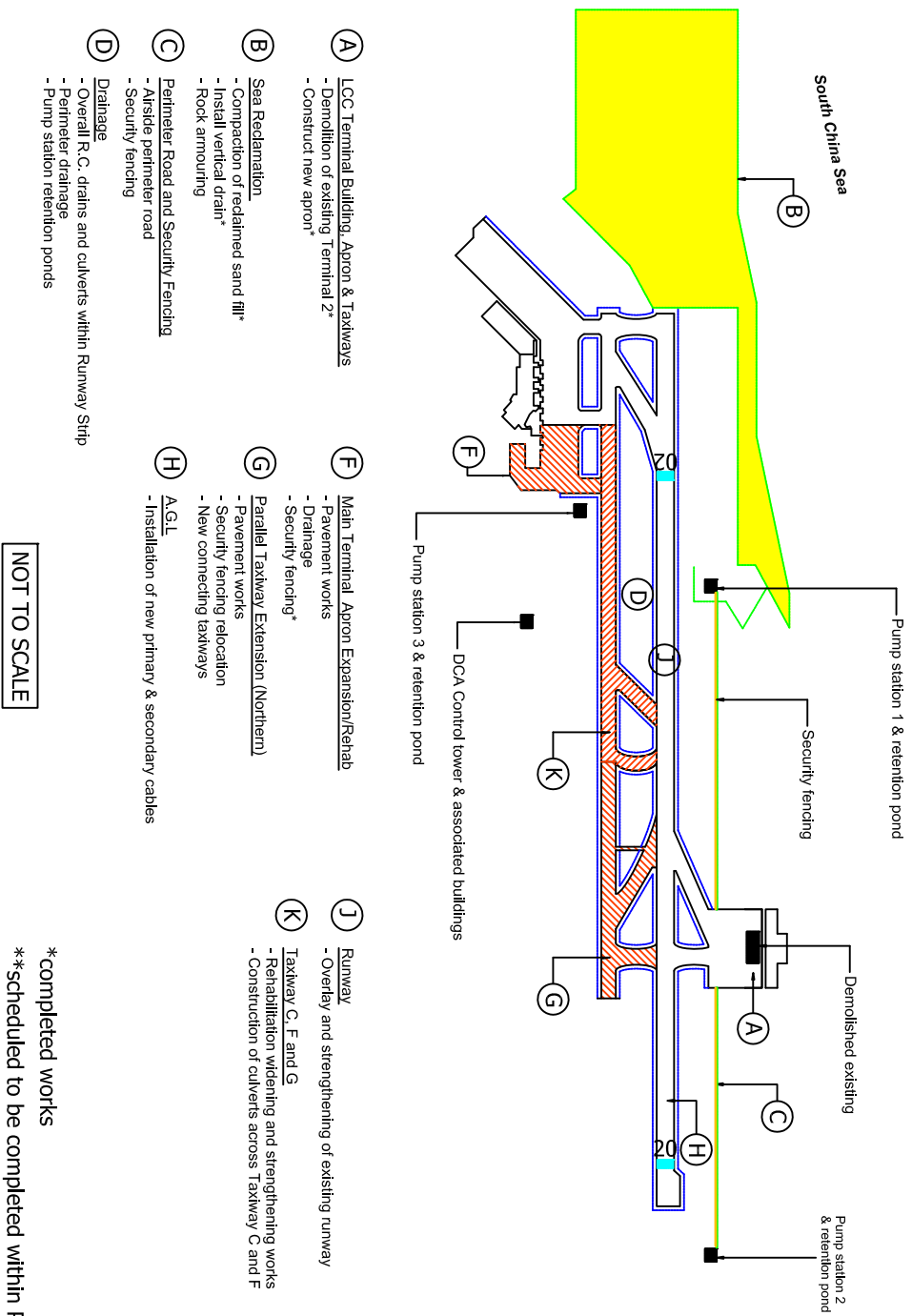


- (A)** Low Cost Carrier Terminal
  - Car park and access roads\*
  - L.C.C Terminal Building\*
- (B)** Sea Reclamation
  - Reclamation and hydraulic sand fill\*
- (C)** Perimeter Road and Security Fencing
  - Airside perimeter road
  - Security fencing
- (D)** Drainage
  - Pump station retention ponds
  - Perimeter drainage
- (E)** New Southern Rapid Exit Taxiway 'H' \*\*
  - Soil treatment, earthworks\*
  - Airfield pavement & A.G.L works
- (F)** Main Terminal Apron Expansion
  - Soil treatment, earthworks for northern and southern apron expansion \*
  - Drainage\*
- (G)** Parallel Taxiway Extension (Northern)
  - Site clearance, soil treatment and earthworks\*
  - Security fencing relocation
- (H)** A.G.L
  - Installation of new primary & secondary cables
- (I)** New DCA Control Tower
  - DCA control tower and associated buildings

NOT TO SCALE

\*completed works  
 \*\*scheduled to be completed within Phase 1

KOTA KINABALU INTERNATIONAL AIRPORT UPGRADING WORKS PHASE 2

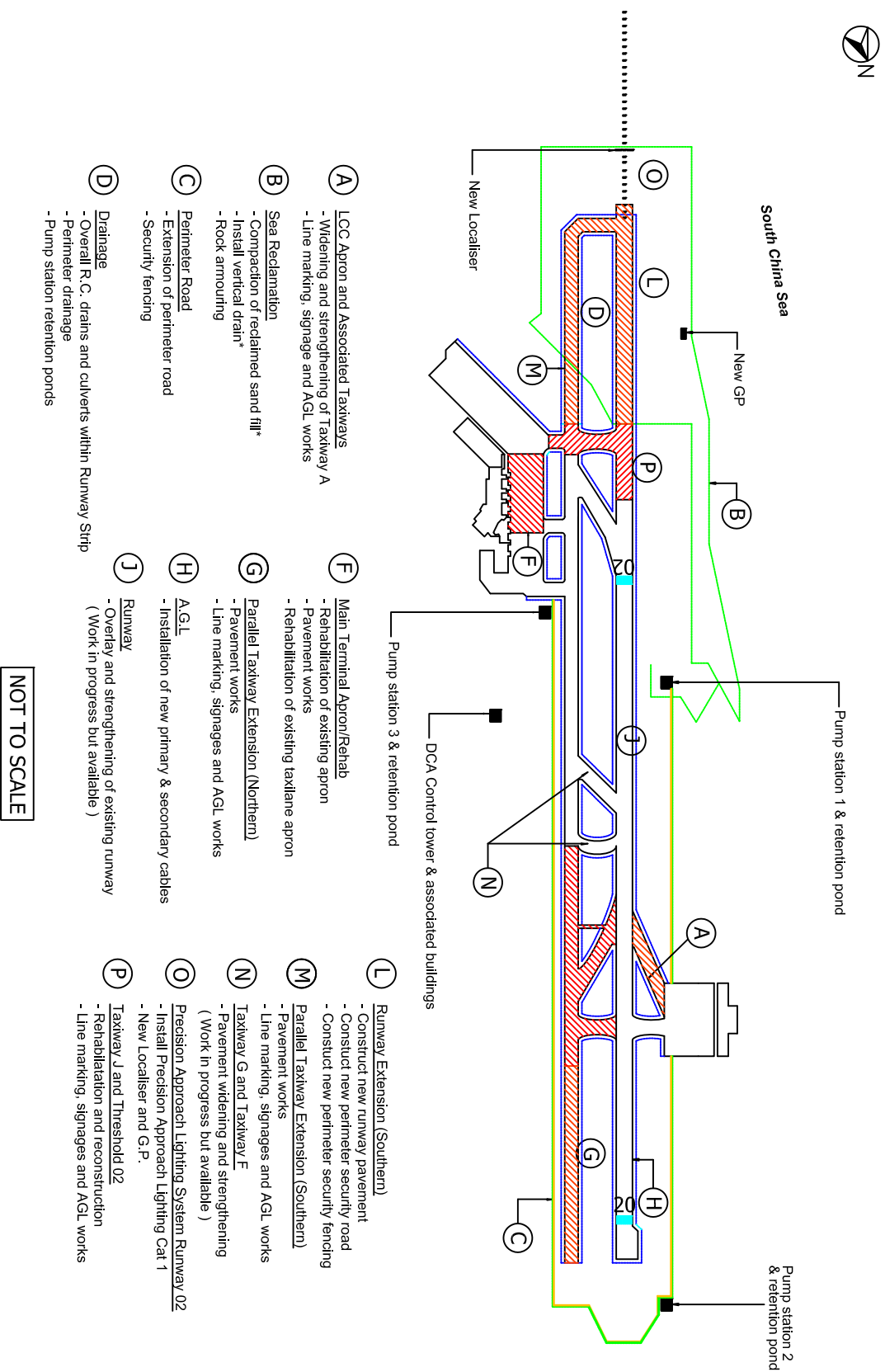


- (A)** LCC Terminal Building, Apron & Taxiways
  - Demolition of existing Terminal 2\*
  - Construct new apron\*
- (B)** Sea Reclamation
  - Compaction of reclaimed sand fill\*
  - Install vertical drain\*
  - Rock armouring
- (C)** Perimeter Road and Security Fencing
  - Airstide perimeter road
  - Security fencing
- (D)** Drainage
  - Overall R.C. drains and culverts within Runway Strip
  - Perimeter drainage
  - Pump station retention ponds
- (E)** Main Terminal Apron Expansion/Rehab
  - Pavement works
  - Drainage
  - Security fencing\*
- (F)** Parallel Taxiway Extension (Northern)
  - Pavement works
  - Security fencing relocation
  - New connecting taxiways
- (G)** Runway
  - Overlay and strengthening of existing runway
- (H)** Taxiway C, E and G
  - Rehabilitation widening and strengthening works
  - Construction of culverts across Taxiway C and F
- (I)** A.G.L.
  - Installation of new primary & secondary cables
- (J)** DCA Control tower & associated buildings
- (K)** Demolished existing

\*completed works  
 \*\*scheduled to be completed within Phase 2

NOT TO SCALE

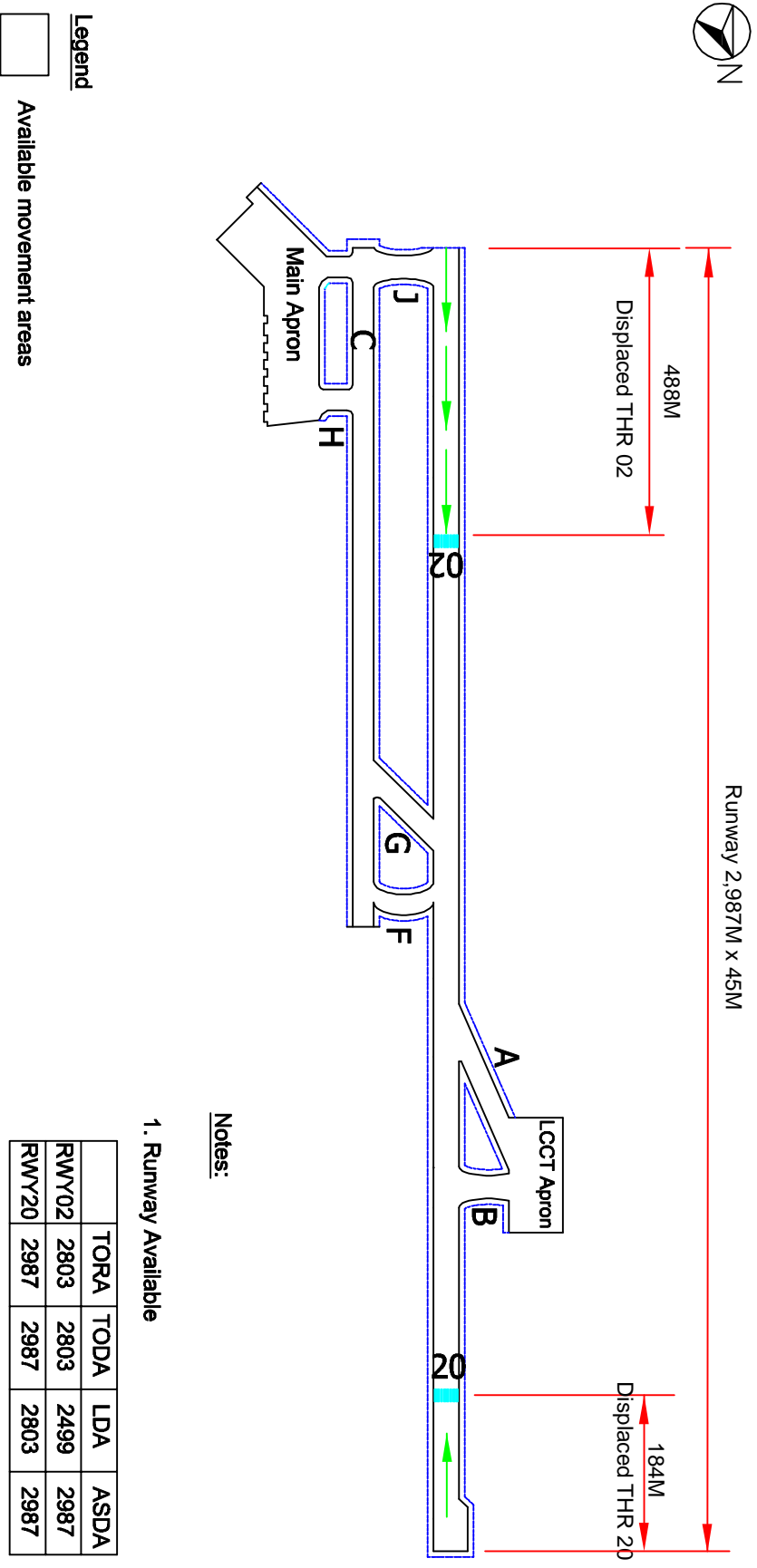
KOTA KINABALU INTERNATIONAL AIRPORT UPGRADING WORKS PHASE 3



NOT TO SCALE



## KOTA KINABALU INTERNATIONAL AIRPORT EXISTING MOVEMENT AREAS



**Legend**  
 Available movement areas

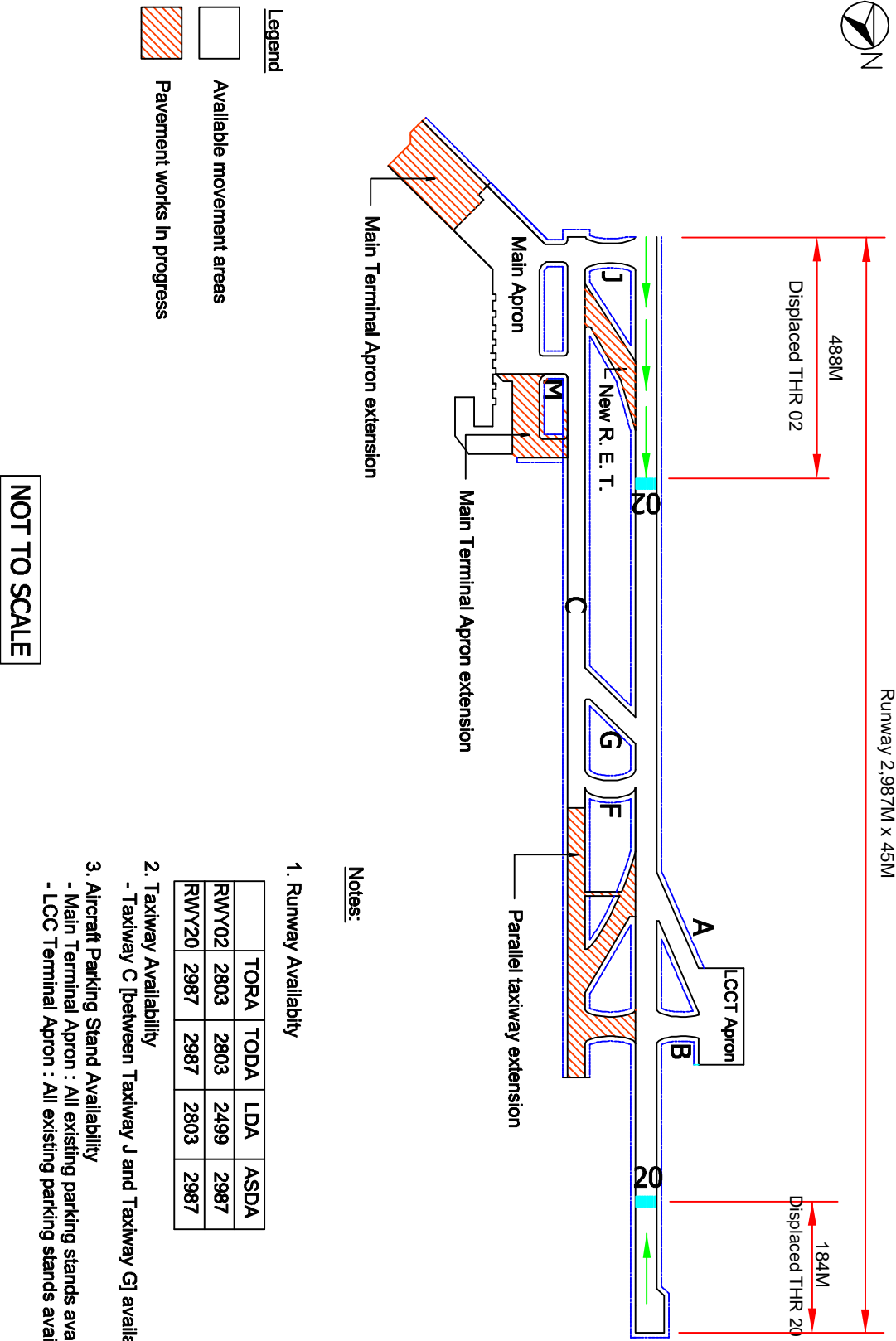
**Notes:**

1. Runway Available

	TORA	TODA	LDA	ASDA
RWY02	2803	2803	2499	2987
RWY20	2987	2987	2803	2987

NOT TO SCALE

KOTA KINABALU INTERNATIONAL AIRPORT UPGRADING WORKS PHASE 1 : MOVEMENT AREAS

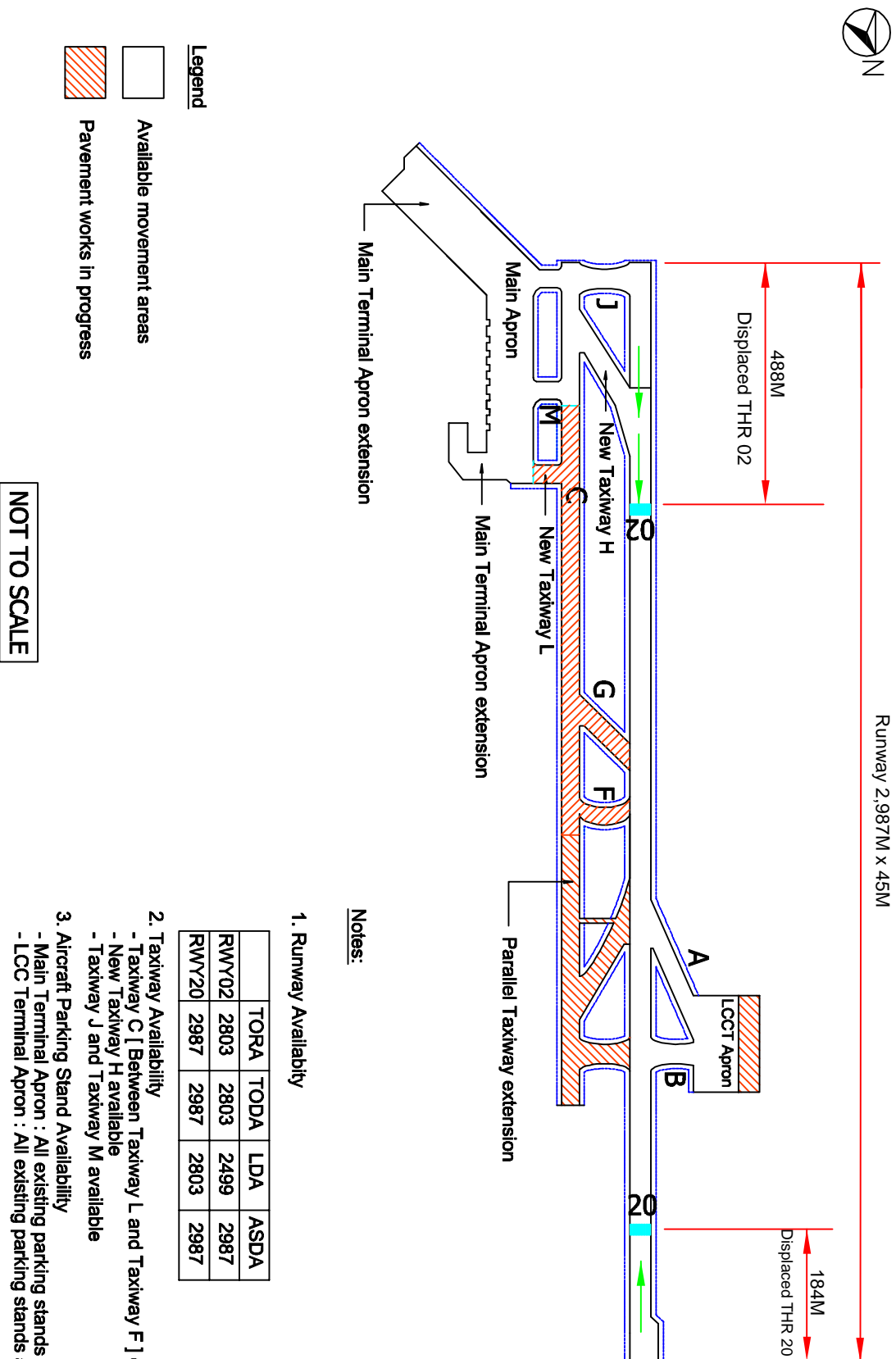


**Notes:**

- Runway Availability**

	TORA	TODA	LDA	ASDA
RWY02	2803	2803	2499	2987
RWY20	2987	2987	2803	2987
- Taxiway Availability**
  - Taxiway C [between Taxiway J and Taxiway G] available.
- Aircraft Parking Stand Availability**
  - Main Terminal Apron : All existing parking stands available
  - LCC Terminal Apron : All existing parking stands available.

## KOTA KINABALU INTERNATIONAL AIRPORT UPGRADING WORKS PHASE 2: MOVEMENT AREAS



**Notes:**

**1. Runway Availability**

	TORA	TODA	LDA	ASDA
RWY02	2803	2803	2499	2987
RWY20	2987	2987	2803	2987

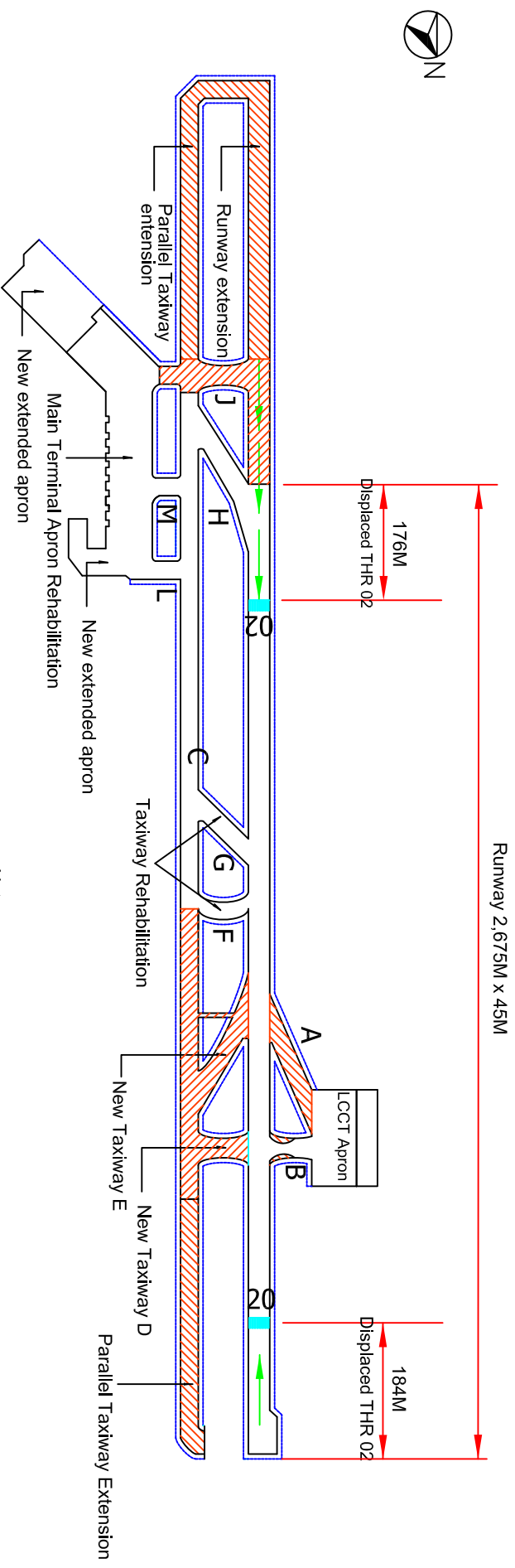
**2. Taxiway Availability**

- Taxiway C [ Between Taxiway L and Taxiway F ] closed.
- New Taxiway H available
- Taxiway J and Taxiway M available

**3. Aircraft Parking Stand Availability**

- Main Terminal Apron : All existing parking stands available.
- LCC Terminal Apron : All existing parking stands available.

### KOTA KINABALU INTERNATIONAL AIRPORT UPGRADING WORKS PHASE 3: MOVEMENT AREAS



- Legend**
- Available movement areas
  - Pavement works in progress

NOT TO SCALE

**Notes:**

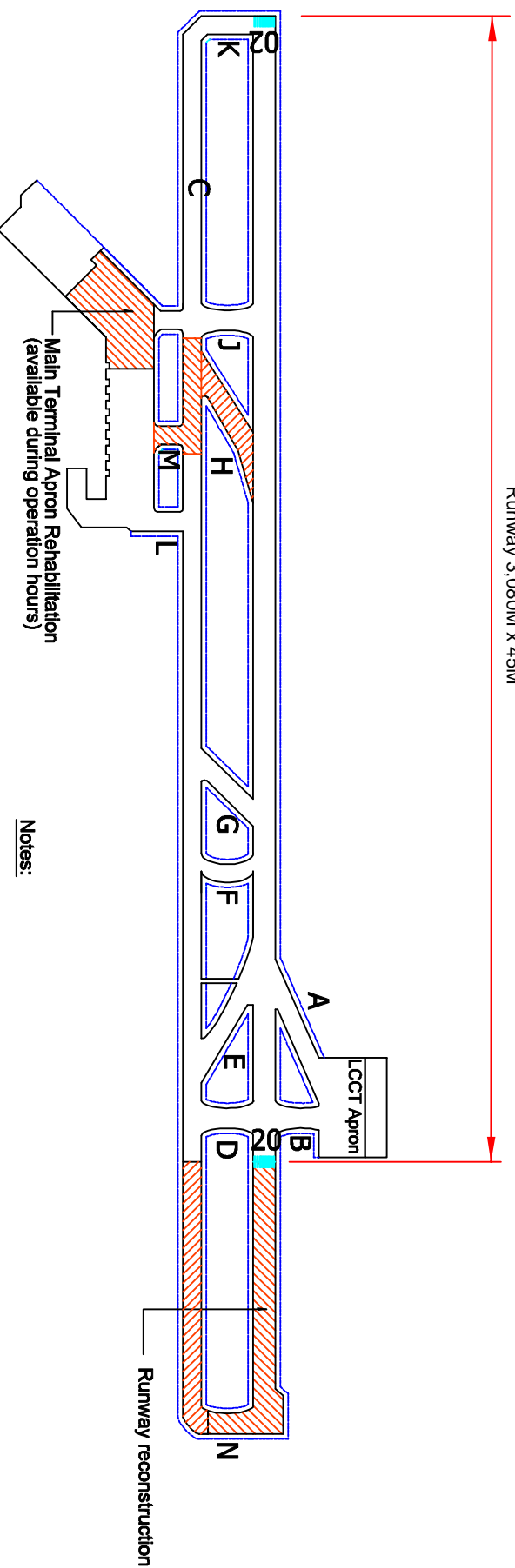
1. Runway Availability
 

	TORA	TODA	LDA	ASDA
RWY02	2491	2491	2499	2675
RWY20	2675	2675	2491	2675
2. Taxiway Availability
  - Taxiway M, L, H, G and F available.
  - Taxiway C (between Taxiway J and Taxiway F) available.
  - Taxiway J and A closed.
3. Aircraft Parking Stand Availability
  - Main Terminal Apron : New parking stands available at extended apron.
  - LCC Terminal Apron : All existing parking stands available.

## KOTA KINABALU INTERNATIONAL AIRPORT UPGRADING WORKS PHASE 4: MOVEMENT AREAS



Runway 3,080M x 45M



- Legend**
- Available movement areas
  - Pavement works in progress

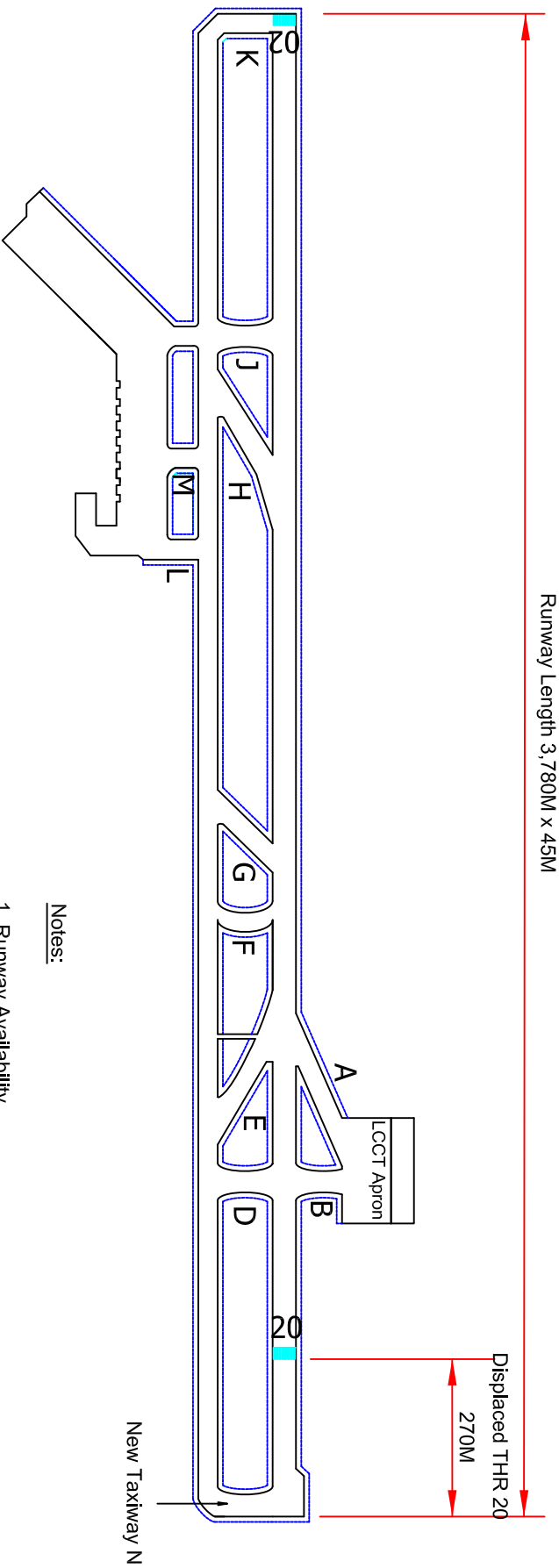
NOT TO SCALE

**Notes:**

1. Runway Availability
 

	TORA	TODA	LDA	ASDA
RWY02	3080	3080	3080	3080
RWY20	3080	3080	3080	3080
2. Taxiway Availability
  - Taxiway C [Between Taxiway J and M and between Taxiway D and N] will be closed.
  - Taxiway M closed.
  - New Taxiway H closed for key joint construction.
3. Aircraft Parking Stand Availability
  - Main Terminal Apron : New parking stands available at extended apron.
  - LCC Terminal Apron : All existing parking stands available.

## KOTA KINABALU INTERNATIONAL AIRPORT COMPLETION OF WORKS: MOVEMENT AREAS



NOT TO SCALE

Notes:

1. Runway Availability

	TORA	TODA	LDA	ASDA
RWY02	3780	3780	3780	3780
RWY20	3780	3780	3510	3780