
AIP SUPPLEMENT MALAYSIA

PHONE : 6-03-8871 4000
TELEX : PENAWA MA 30128
FAX : 6-03-8881 0530
AFTN : WMKKYAYS
COMM : AIRCIVIL
KUALA LUMPUR

AERONAUTICAL INFORMATION SERVICES
DEPARTMENT OF CIVIL AVIATION
NO. 27, PERSIARAN PERDANA
LEVEL 1-4, PODIUM BLOCK, PRECINCT 4,
62618 PUTRAJAYA
MALAYSIA

33 / 2007
13 AUG

KOTA KINABALU FLIGHT INFORMATION REGION

KOTA KINABALU INTERNATIONAL AIRPORT ESTABLISHMENT AND OPERATION OF NEW TAXIWAYS

1. PURPOSE

- 1.1 The purpose of this AIP Supplement is to provide advance information regarding the naming of the taxiways that will be used for operation when the final aircraft manoeuvring areas configuration at Kota Kinabalu airport are implemented.

2. TAXIWAY CONFIGURATION

- 2.1 The new taxiways at Kota Kinabalu airport will be completed in stages and comprise of the main full length parallel taxiway, 2 rapid exit taxiways, and several inter section connecting taxiways to facilitate the expeditious movement of aircraft.

(Refer to CHART APPENDIX A for layout and taxiway names)

3. REGULATION OF AIRCRAFT ON MOVEMENT AREAS

- 3.1 The routes to be used by aircraft when taxiing to and from the runway from Terminal 1 or Terminal 2 apron will be specified by air traffic control. Pilots shall comply with air traffic directions. The issuance by air traffic control of a taxi route on the movement areas does not relieve the pilot-in-command of the responsibility to maintain separation with other aircraft on the movement areas.

4. IMPLEMENTATION

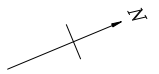
- 4.1 This AIP Supplement and relevant charts will be applicable upon completion of the relevant section of the movement areas.
- 4.2 The availability for operational usage of each taxiways when completed will be notified by trigger Notam.

5. CANCELLATION

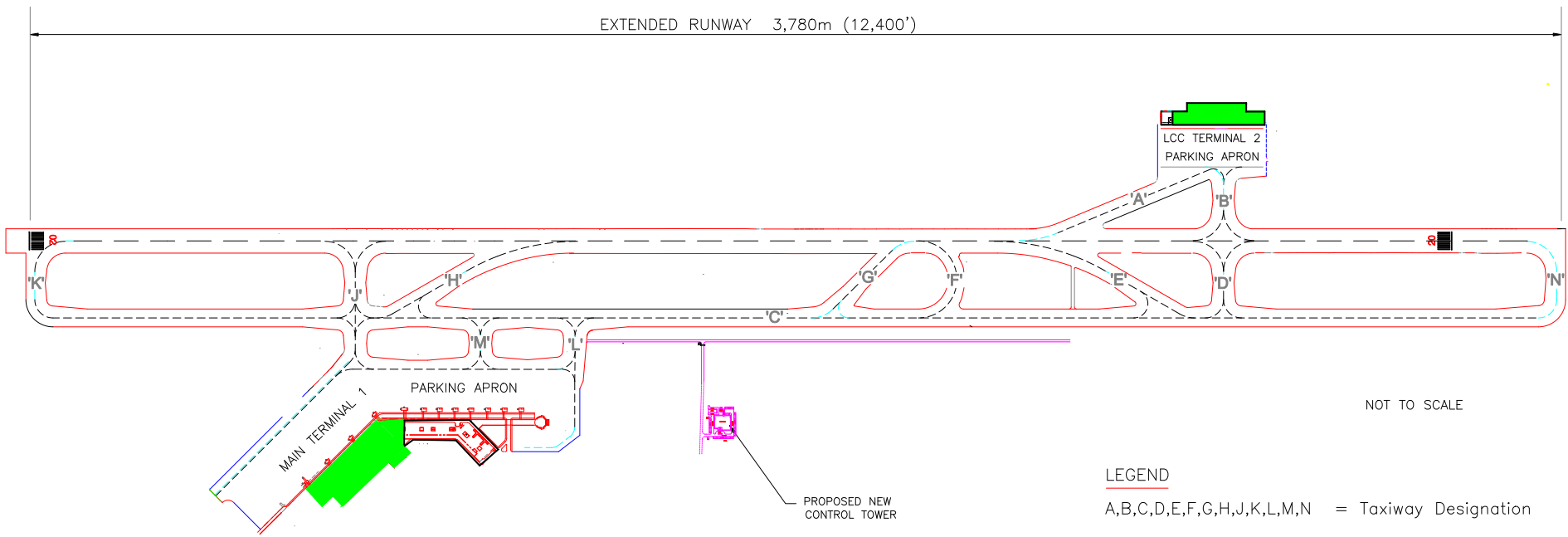
5.1 This AIP Supplement will remain current until information is published in AIP Malaysia.

AZHARUDDIN ABDUL RAHMAN
Director General
Department of Civil Aviation
Malaysia

REDEVELOPMENT OF KOTA KINABALU INTERNATIONAL AIRPORT - DESIGNATION OF TAXIWAYS



EXTENDED RUNWAY 3,780m (12,400')



LEGEND
A,B,C,D,E,F,G,H,J,K,L,M,N = Taxiway Designation